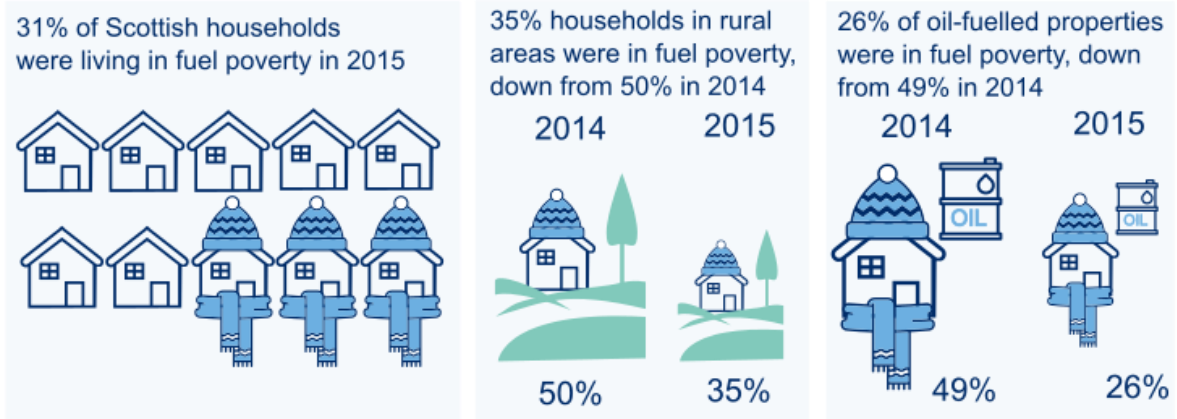
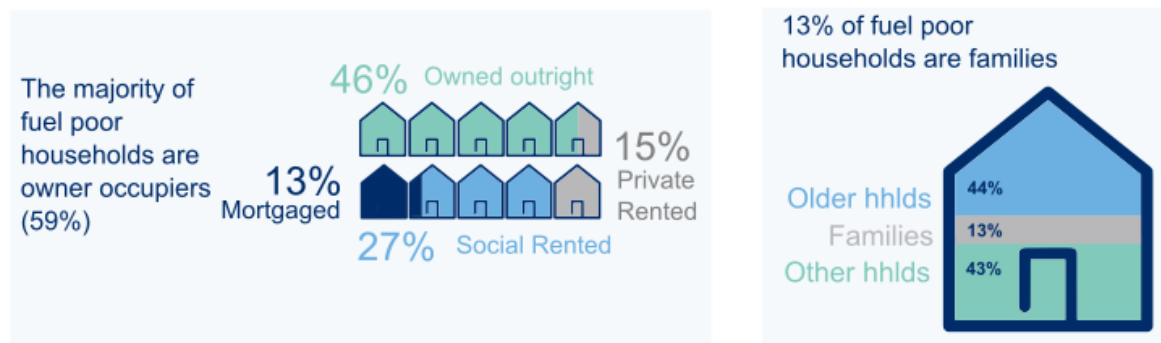
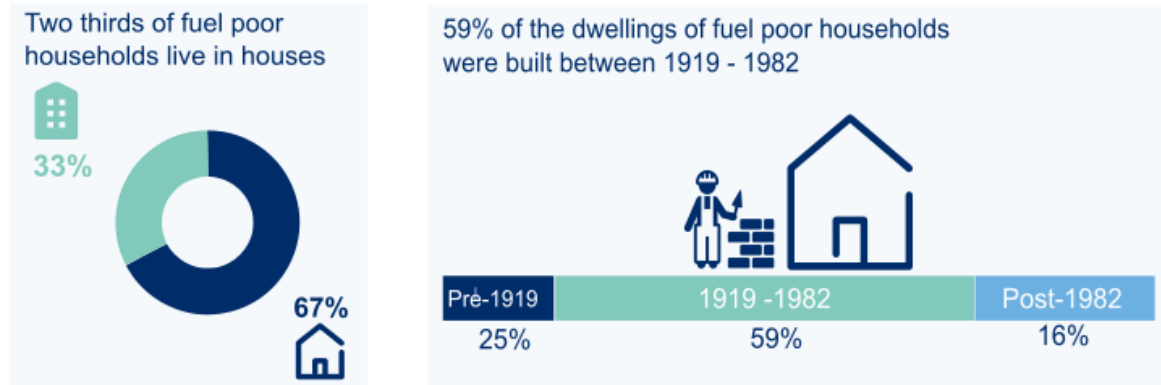


Infographic Summary: 2015 Scottish House Condition Survey (SHCS) Key Findings

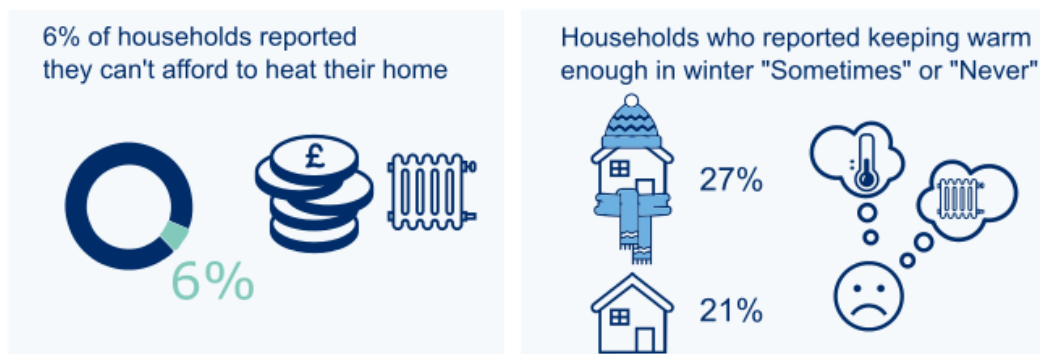
FUEL POVERTY



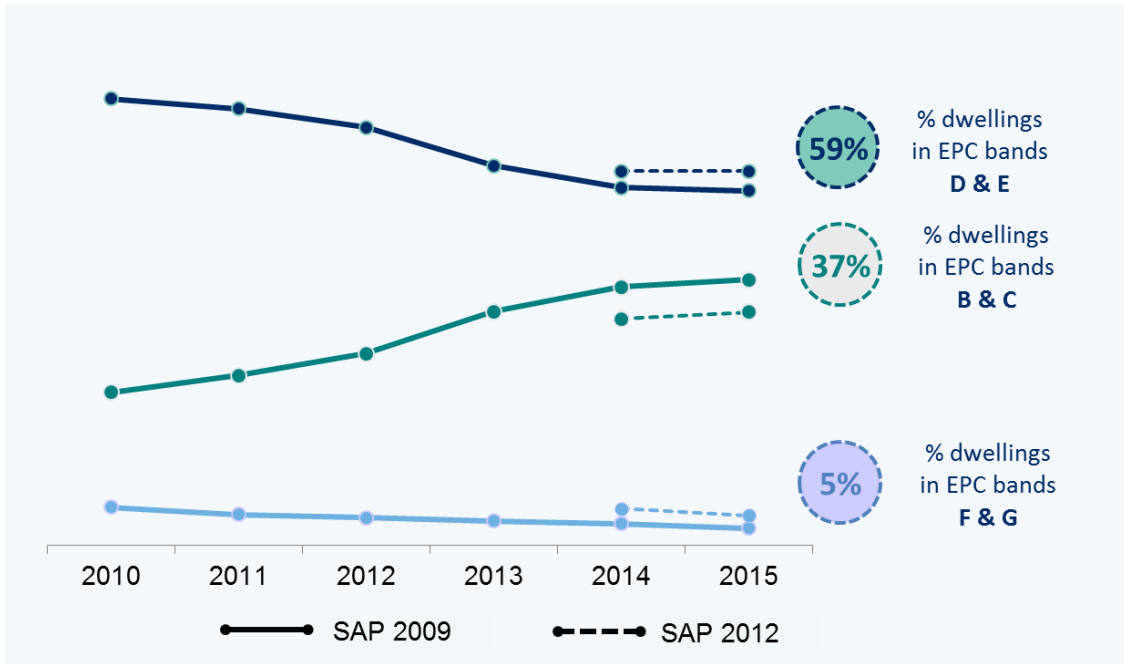
COMPOSITION OF FUEL POOR HOUSEHOLDS



ENERGY PERCEPTIONS

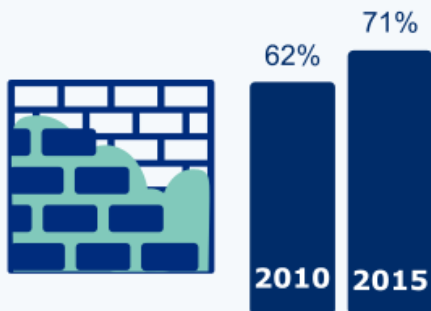


ENERGY EFFICIENCY



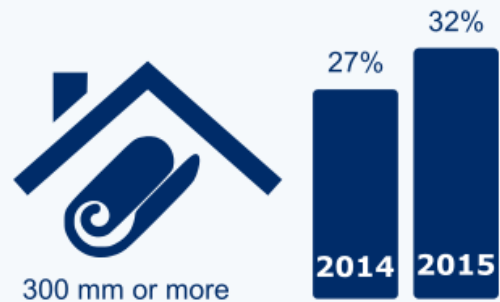
WALL INSULATION

Insulated cavity wall dwellings increased by 9 percentage points in the last 5 years



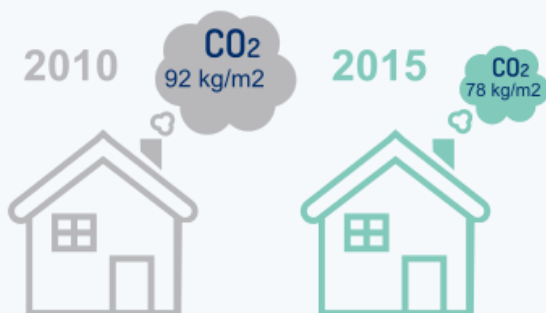
LOFT INSULATION

Lofts insulated to a high standard (300 mm or more) increased by 5 percentage points in the last year



CARBON EMISSIONS

Average household produced 78 kg/m² of CO₂ emissions, down from 92 kg/m² in 2010



HOUSING QUALITY

Improvement of 3 percentage points since 2013 in dwellings free from any damp or condensation

