

# Statistical Bulletin

## Economy Series

A NATIONAL STATISTICS PUBLICATION FOR SCOTLAND

### SCOTLAND'S GLOBAL CONNECTIONS SURVEY 2013 Estimating Exports from Scotland



26th January 2015

This Statistical Bulletin presents the results of Scotland's Global Connections Survey<sup>1</sup> (SGCS) for 2013, the only export survey covering all sectors of the Scottish economy. This is the 12th year of publication. Figures are presented in nominal terms and so are not adjusted for inflation.

Companies provided export information relating to 2013. International exports are shown by industry and destination from 2010 onward. Information from 2002 is provided in the accompanying excel tables.

The industry definition relates to the Standard Industrial Classification of the reporting company. Rest of UK exports and total exports (combining international and rest of UK) are also included in this publication.

#### Key findings

- Scottish international exports in 2013 (excluding oil and gas) are provisionally estimated at £27.9 billion, an increase of £1.9 billion (7.2%) since 2012.
- £16.8 billion (60.2%) of all International exports are attributable to manufacturing sector companies, an increase of £1.3 billion (8.2%) over the year. £9.2 billion (33.1%) are attributable to the service sector, an increase of £590 million (6.8%) over the year.
- The two largest exporting industries in 2013, as in previous years, were manufacture of food & beverages (£5 billion, 18% of all exports) and manufacture of coke, refined petroleum and chemical products (£3.5 billion, 12.6% of all exports).
- These 2 sectors are followed by legal, accounting, management, architecture, engineering, technical testing and analysis (£1.9 billion), manufacture of machinery and equipment (£1.7 billion) and manufacture of computer, electronic & optical products (£1.6 billion).

---

<sup>1</sup> The Global Connections Survey was carried out by the Scottish Government with support from Scottish Development International. Results are based on data received from around 1,900 companies, supplemented with previous years' surveys and information obtained from other sources.

- Together the top 5 industry sectors account for around 49 per cent of total international exports from Scotland.
- The USA is Scotland's top international export destination country (as in the last 11 years) with an estimated £3.9 billion exports, an increase of £185 million (5%) since 2012. Netherlands was the second top export destination country, with exports of £2.0 billion, increasing by £55 million (3%). Germany is Scotland's third top export destination, estimated to be worth £1.9 billion, increasing by £195 million (11%) since 2012. The Netherlands and Belgium are consistently reported in Scotland's top trading partners, however as these countries contain key ports many of these goods are for onward supply to other countries.
- The top five international export markets (USA, Netherlands, Germany, France, and Denmark) accounted for £11.2 billion of international exports (40 per cent of all international exports) from Scotland.
- Just under half of international exports are destined for countries within the European Union (estimated at £12.9 billion, 46%). Within the EU, the Netherlands was the largest market, followed next by Germany and followed by France (£1.8 billion exports in 2013).
- Exports to the rest of UK (from Scotland) in 2013 (excluding oil and gas) are provisionally estimated at £46.2 billion, an increase of £1.2 billion (2.7%) over the year.
- Service sector exports are of greater importance to the rest of UK than Internationally. 26.2% (£12.1 billion) of rUK exports are attributable to manufacturing sector companies and 51.4% (£23.7 billion) are attributable to service sector companies. This compares to 60.2% for manufacturing and 33.1% for service for International exports.
- Total international and rest of UK exports in 2013 (excluding oil and gas) are provisionally estimated at £74.1 billion. Rest of UK exports account for 62% of all exports from Scotland (International and rUK combined).

## 1. International Exports

### 1.1 International Exports by broad industry Group and Region of destination

Scottish international exports in 2013 (excluding oil and gas) are provisionally estimated at £27.9 billion, an increase of £1.9 billion (7.2%) since 2012.

£16.8 billion (60.2%) of all International exports are attributable to manufacturing sector companies, an increase of £1.3 billion (8.2%) over the year. £9.2 billion (33.1%) are attributable to the service sector, an increase of £590 million (6.8%) over the year.

Just under half of exports are destined for countries within the European Union (estimated at £12.9 billion, 46%).

**Table 1: Scottish International exports by sector and trade area (£ million) 2013**

	EU28	% of all EU	Non-EU	% of all non-EU	Total exports	%
<b>Total Exports</b>	<b>12,910</b>		<b>14,155</b>		<b>27,875</b>	
Agriculture, Forestry & Fishing	125	1	135	1	260	1
Production <sup>1,2</sup> & Construction	9,310	72	9,065	64	18,380	66
<i>of which manufacturing</i>	<i>8,870</i>	<i>69</i>	<i>7,910</i>	<i>56</i>	<i>16,780</i>	<i>60</i>
Services <sup>3</sup>	3,480	27	4,955	35	9,235	33

Notes:

1. **Total Exports does not equal the sum of EU28 and non-EU.** This is because EU28 and Non-EU estimates exclude exports from some service sector industries - SIC2007 36, 37, 39, 50, 51, 64 and 65. Whereas the 'Total exports' column includes these sectors in the figures. See background note 7.2.3

2. Excludes the value of oil & gas extracted from the UK Continental Shelf, see Notes.

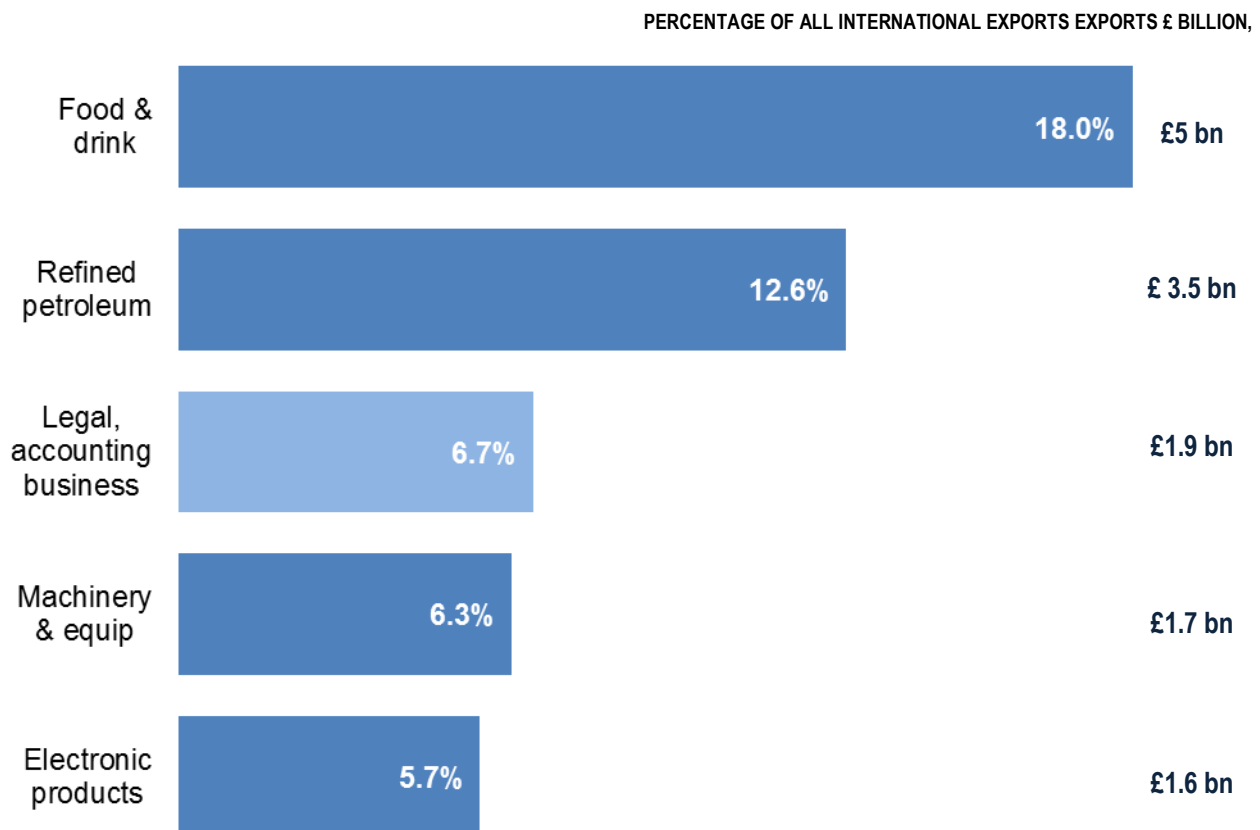
3. Includes manufacturing, mining & quarrying and electricity/gas/water supply.

## 1.2 International Exports by Industry

The 2 largest exporting industries in 2013, as in previous years, were manufacture of food & beverages (£5 billion, 18% of all exports) and manufacture of coke, refined petroleum and chemical products (£3.5 billion, 12.6% of all exports).

These 2 sectors are followed by legal, accounting, management, architecture, engineering, technical testing and analysis (£1.9 billion), machinery and equipment (£1.7 billion) and computer, electronic & optical (£1.6 billion).

**Figure1 Scotland's top 5 International Exporting Industries**



### Key

- Manufacturing

- Services

Source: Global Connections Survey 2013

## 1.3 International Exports for Manufacturing and Service Industries

Manufacturing companies account for 60.2% of all International exports. Increasing by £1.3 billion (8.2%) to an estimated £16.8 billion.

Within the manufacturing sector the exports of manufactured food and drink is estimated at £5 billion increasing by £10 million (0.2%) over the year. Exports from the whisky industry, 85% of the food and drink manufacturing sector exports are estimated at £4.2 billion, decreasing by £15 million (0.3%) over the year.

The manufacture of coke, refined petroleum and chemical products sector is estimated at £3.5 billion increasing by £155 million (4.7%) since 2012.

Food and drink and refined petroleum account for around 51% of the value of all exports from business in the manufacturing sector.

The largest annual increases in value of exports in the manufacturing sector were in: Machinery and equipment (up £485 million), and transport equipment (up £210 million).

**Figure 2 International Exports by Industry (Industry, international exports value(£billion))**

Refined petroleum 3.5	Metals 0.6	Pharm 0.3	Oth 0.2	Mining 1.2		Other 0.3	Utilities 0.3
	Repair 0.6	Textiles 0.4		Educ 0.6	IT 0.5	Accom 0.3	Tele 0.3
	Rubber & plastics 0.8	Elect equip 0.4	Wood & paper 0.4	Transport 0.9		Scientific 0.5	Other 0.5
Food & drink 5	Transport 1.2			Wholesale 1.4	Admin 1.2		
	Machinery 1.7	Electronics 1.6		Legal & acc 1.9	Finance 1.3		

**Key**

- Manufacturing

- Services ('Other' includes: Other Professional, Real Estate, Publishing)

- Other ('Other' includes; Agriculture, Construction)

Source: Global Connections Survey 2013

Exports from the service sector account for 33.1% of all exports, increasing by £590 million (6.8%) to £9.2 billion. Within the service sector, the legal and accounting, management and architecture, engineering, technical testing and analysis activities is worth £1.9 billion and is the largest international exporting service. Followed by wholesale and retail trade; repair of motor vehicles and motorcycles (estimated £1.4

billion). Financial and Insurance activities (£1.3 billion) and Administration and Support (£1.2 billion).

The largest annual changes in the services sector were in : Transportation and Storage (up £255 million to £910 million), Admin and Support (up £215 million to £1.2 billion).and Legal Accounting and Business (up £155 million to £1.9 billion).

**Table 2: Total International Exports by industry (£million), 2010 – 2013**

SIC 2007 Division		£ million				2012-2013 change	2012-2013 % change
		2010	2011	2012	2013		
	<b>Total International Exports</b>	<b>23,165</b>	<b>25,715</b>	<b>26,015</b>	<b>27,875</b>	<b>1,860</b>	<b>7.2</b>
1, 2, 3	Agriculture, Forestry and Fishing	250	285	250	260	10	4.6
5,6, 7,8,9	Mining and Quarrying	1,345	1,345	1,180	1,195	15	1.3
	<b>Manufacturing</b>						
	<i>Manufacture of...</i>						
10, 11, 12	Food products, beverages and tobacco products	4,100	4,900	5,005	5,015	10	0.2
11.01	<i>Of Which Distilling, rectifying and blending of spirits</i>	3,450	4,225	4,275	4,260	-15	-0.3
13, 14, 15	Textiles, wearing apparel, leather and related products	290	350	375	365	-10	-2.5
16, 17, 18	Wood and paper products; printing and reproduction of recorded media	400	395	405	420	15	3.4
19, 20	Coke, refined petroleum and chemical products	2,680	3,675	3,350	3,505	155	4.7
21	Basic pharmaceutical products and pharmaceutical preparations	340	325	360	340	-20	-5.4
22, 23	Rubber and plastic products, and other non-metallic mineral products	570	730	790	815	25	3.3
24, 25	Basic metals and fabricated metal products, except machinery and equipment	510	455	510	560	50	10.0
26	Computer, electronic and optical products	1,395	1,390	1,400	1,595	200	14.1
27	Electrical equipment	345	380	350	435	90	25.1
28	Machinery and equipment NEC	1,050	1,035	1,260	1,745	485	38.5
29, 30	Transport equipment	1,065	930	1,025	1,230	210	20.4
31, 32	Other manufacturing: including furniture	165	190	205	175	-30	-14.8
33	Repair and installation of machinery and equipment	365	425	485	580	95	19.2
	<b>Total Manufacturing</b>	<b>13,270</b>	<b>15,180</b>	<b>15,510</b>	<b>16,780</b>	<b>1,270</b>	<b>8.2</b>
35, 36, 37, 38, 39	Utilities	225	280	350	330	-20	-6.2
41, 42, 43	Construction	115	95	80	75	-5	-3.3
	<b>Services</b>						
45, 46, 47	Wholesale <sup>1</sup> retail trade; repair of motor vehicles and	1,240	1,420	1,530	1,350	-185	-11.9
49,50,51,52,53	Transportation and storage	770	770	655	910	255	38.8
55, 56	Accommodation and food service activities	275	280	290	275	-10	-3.9
58, 59, 60	Publishing, audiovisual and broadcasting activities	80	80	70	45	-25	-38.1
61	Telecommunications	210	210	115	255	140	123.4
62, 63	IT and other information services	520	480	530	500	-30	-5.9
64, 65, 66	Financial and insurance activities	1,425	1,630	1,365	1,280	-90	-6.5
68	Real estate activities	40	35	30	45	15	46.7
69,70, 71	Legal, accounting, management, architecture, engineering, technical testing and analysis activities	1,505	1,535	1,715	1,870	155	9.0
72	Scientific research and development	340	380	405	500	95	23.1
73, 74, 75	Other professional, scientific and technical activities	190	220	235	200	-35	-15.3
77,78,79,80,81,82	Administrative and support service activities	775	855	995	1,210	215	21.4
85	Education	445	515	550	620	70	12.3
86,87,88,90,91,92,93,94,95	Other Services <sup>2</sup>	145	125	160	185	25	16.9
	<b>Total Services</b>	<b>7,955</b>	<b>8,535</b>	<b>8,650</b>	<b>9,235</b>	<b>590</b>	<b>6.8</b>

Notes:

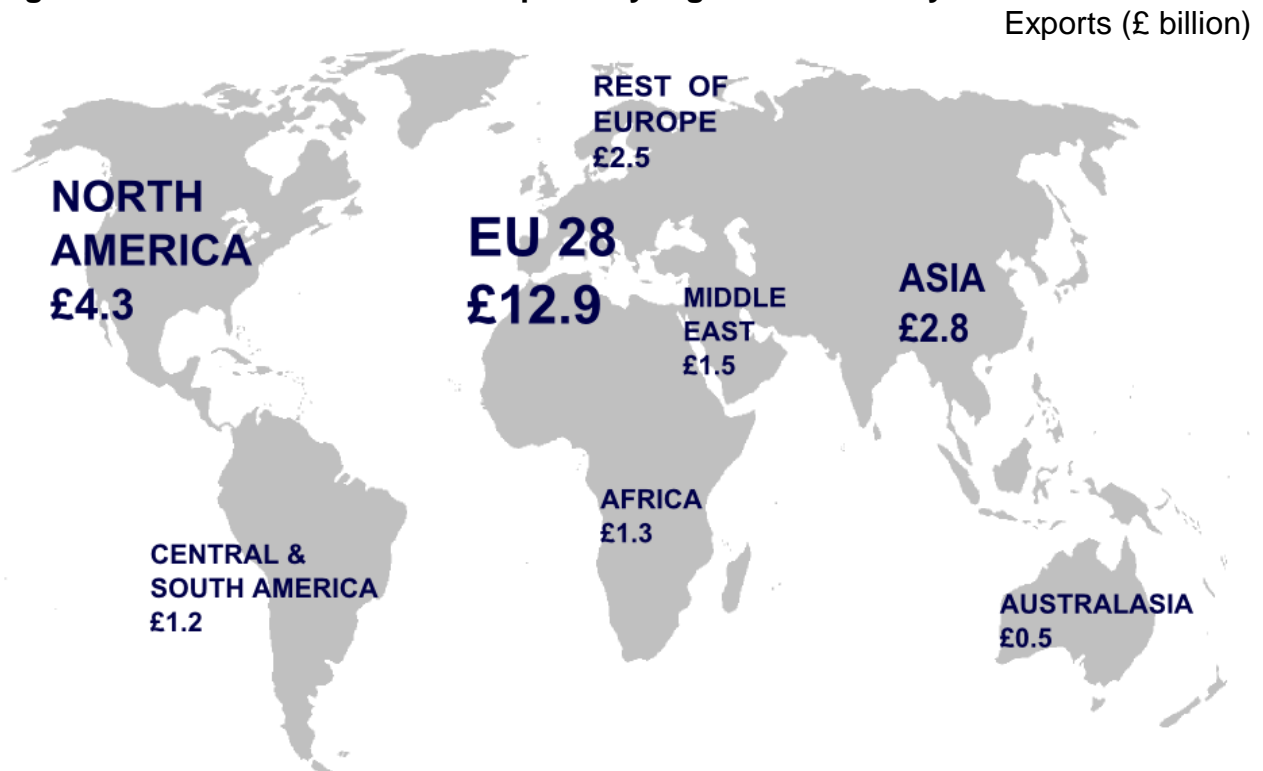
1. Wholesale figures include the wholesale of agricultural products, fish and crustaceans molluscs
2. 'Other services' included the following activities: health and other community activities, social and personal services activities
3. Industry grouping are based on the Industrial Classification of the reporting company.
4. All % change calculations are based on unrounded data

### 1.4 Scotland International Export Destinations

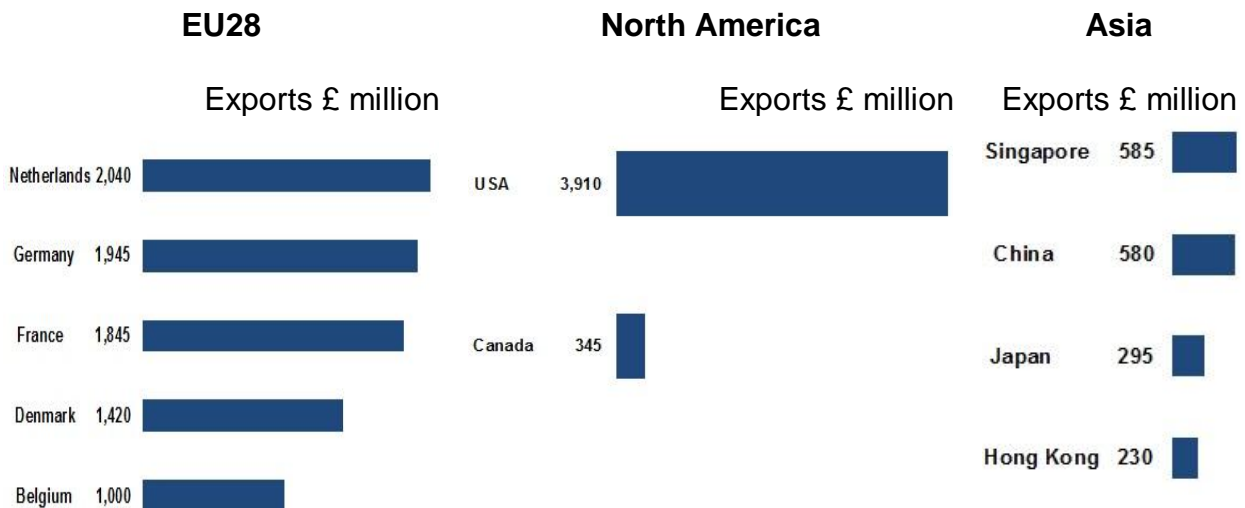
The largest value of exports from Scotland to one region are exported to the EU 28 at £12.9 billion, 46% of all exports. The next largest region is North America at £4.3 billion, 15.3% of all exports.

Over the year to 2013 exports grew for all regions apart from Central and South America (down £5 million) and Asia (down £45 million). Exports increased by £1.4 billion (12.8%) to the EU 28, and increased by £165 million to Middle East and £115 million to North America and.

**Figure 3: Scotland International exports by region and country**



**Figure 4: Scotlands top export country destinations by selected regions (£ million)**



**Table 3: Total international exports by geographic region 2010 – 2013**

£ million							
Destination	2010	2011	2012	2013	2012-2013 change	2012-2013 % change	% of all
European Union 28	10,055	11,735	11,485	12,910	1,430	12.4	46.3
Rest of Europe	2,200	2,310	2,325	2,505	180	7.7	9.0
North America	3,515	3,710	4,145	4,255	115	2.7	15.3
Central and South America	965	1,220	1,180	1,170	-5	-0.6	4.2
Middle East	1,215	1,195	1,335	1,500	165	12.6	5.4
Asia	2,360	2,710	2,870	2,825	-45	-1.5	10.1
Africa	1,320	1,220	1,180	1,290	110	9.3	4.6
Australasia	405	415	505	530	25	4.7	1.9
<b>Unallocable</b>	<b>1,130</b>	<b>1,200</b>	<b>990</b>	<b>890</b>			
<b>Total</b>	<b>23,165</b>	<b>25,715</b>	<b>26,015</b>	<b>27,875</b>	<b>1,860</b>	<b>7.2</b>	

Notes:

1. The estimates for regions exclude exports from SIC2007 36, 37, 39, 50, 51, 64 and 65. These are included in the inallocable row.
2. The unallocable row includes exports which have not been allocated to a region
3. All % change calculations are based on unrounded data

## 1.5 Top 10 destination countries

The USA continued to be the top export destination country with an estimated £3.9 billion of exports from Scotland (14% of total exports). This is followed by Netherlands £2 billion (7.3% of the total), Germany with £1.9 billion (7 per cent of the total) and France, £1.8 billion (6.6% of the total). The top 10 export destinations accounted for 56.6 per cent of total international exports.

**Table 4: Top 20 export destinations (£ million), 2013**

Rank	Destination	Total Exports	% of all Exports	Rank	Destination	Total Exports	% of all Exports
1	USA	3,910	14.0	11	Sweden	715	2.6
2	Netherlands	2,040	7.3	12	Switzerland	615	2.2
3	Germany	1,945	7.0	13	UAE (5)	605	2.2
4	France	1,845	6.6	14	Singapore	585	2.1
5	Denmark	1,420	5.1	15	China	580	2.1
6	Norway	1,110	4.0	16	Australia	435	1.6
7	Belgium	1,000	3.6	17	Canada	345	1.2
8	Eire	920	3.3	18	Japan	295	1.1
9	Spain	870	3.1	19	South Africa	285	1.0
10	Italy	745	2.7	20	Brazil	285	1.0

Note: The estimates for countries exclude exports from SIC2007 36,37,39,50,51,64 and 65.

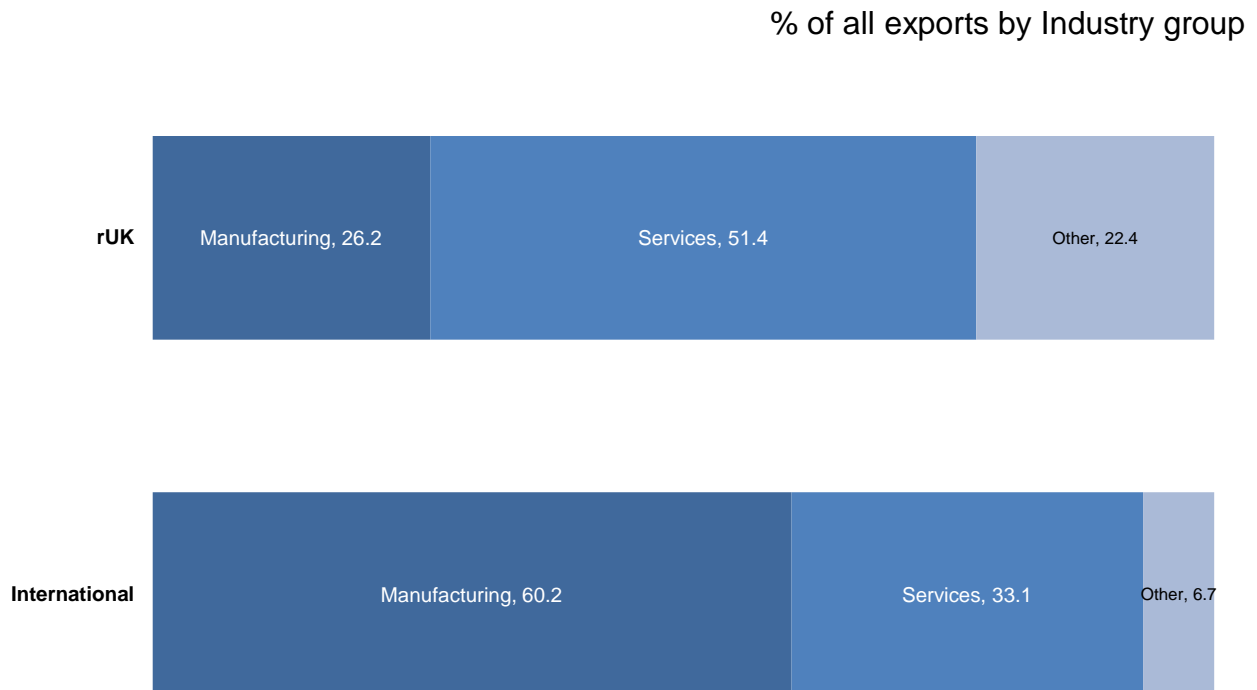
## 2. Exports to the rest of the UK

*Rest of UK exports estimates should be treated with some caution. It is more difficult to ascertain the final destination of sales within the UK as companies have no statutory requirement to collate financial information below UK level. Furthermore, particular sectors face challenges in determining what constitutes an 'export'. In an Intra-UK situation, this is particularly the case in the service sector where output is harder to quantify and the residence of the final consumer may be less clear.*

Rest of UK exports in 2013 (excluding oil and gas) are provisionally estimated at £46.2 billion. The combined value of international and rest of UK exports in 2013 (excluding oil and gas) are provisionally estimated at £74.1 billion. Rest of UK exports account for 62% of all exports (International and rUK combined) from Scotland

Service sector exports to the rest of the UK are of greater importance than for International exports. 26.2% (£12.1 billion) of rUK exports are attributable to manufacturing sector companies and (51.4%) £23.7 billion are attributable to service sector companies. This compares to 60.2% for manufacturing and 33.1% for service for International exports.

**Figure 5: International and rUK exports, % in Manufacturing and Services 2013**



Increase in exports to rUK is more subdued than for International exports. There has been an increase in the overall rest of UK exports of £1.2 billion (2.7%) since 2012. This is due to increases in the manufacturing sector (£35 million) and the service sector (£630 million).

The 5 largest industry groups for rUK exports were:

- Service Finance and Insurance (£7.9 billion);
- Utilities (£5.6 billion);
- Services Wholesale & retail trade, repair of motor vehicles (£4.8 billion);
- Manufacture of food products, beverages and tobacco (£4.3 billion); and
- Mining and Quarrying (£2.8 billion).

In the last year the largest increases were in the following industry sectors:

- Administrative and support service activities, up £735 million over the year to £2.6 billion
- Utilities, up £705 million over the year to £5.6
- Financial and Insurance Activities, up £375 million over the year to £7.9 billion

**Table 5: Rest of UK Exports by Industry (£million), 2010 – 2013**

		£ million					
SIC 2007 Division		2010	2011	2012	2013	2012-2013 change	2012-2013 % change
	<b>Total rest of UK Exports</b>	<b>44,135</b>	<b>44,365</b>	<b>44,975</b>	<b>46,175</b>	<b>1,200</b>	<b>2.7</b>
1, 2, 3	Agriculture, Forestry and Fishing	765	735	800	580	-220	-27.8
5,6, 7,8,9	Mining and Quarrying	2,785	2,780	2,755	2,810	55	2.0
	<b>Manufacturing</b>						
	<i>Manufacture of...</i>						
10, 11, 12	Food products, beverages and tobacco products	3,695	3,635	4,010	4,285	275	6.9
11.01	<i>Of Which Distilling, rectifying and blending of spirits</i>	645	645	685	725	40	6.0
13, 14, 15	Textiles, wearing apparel, leather and related products	250	250	255	255	0	-0.1
16, 17, 18	Wood and paper products; printing and reproduction of	1,010	890	870	845	-25	-2.9
19, 20	Coke, refined petroleum and chemical products	2,295	2,185	2,070	2,200	130	6.4
21	Basic pharmaceutical products and pharmaceutical	280	255	265	230	-35	-13.6
22, 23	Rubber and plastic products, and other non-metallic mineral	495	480	430	465	40	8.9
24, 25	Basic metals and fabricated metal products, except machinery	725	705	785	680	-105	-13.5
26	Computer, electronic and optical products	685	685	755	655	-100	-13.0
27	Electrical equipment	175	180	120	105	-15	-13.3
28	Machinery and equipment NEC	530	475	490	645	160	32.4
29, 30	Transport equipment	1,380	1,325	1,440	1,140	-295	-20.7
31, 32	Other manufacturing: including furniture	115	110	135	145	10	7.5
33	Repair and installation of machinery and equipment	430	430	445	445	0	0.1
	<b>Total manufacturing</b>	<b>12,070</b>	<b>11,605</b>	<b>12,065</b>	<b>12,100</b>	<b>35</b>	<b>0.3</b>
35, 36, 37, 38, 39	Utilities	3,315	4,795	4,905	5,610	705	14.4
41, 42, 43	Construction	1,340	1,300	1,340	1,340	0	-0.2
	<b>Services</b>						
45, 46, 47	Wholesale <sup>1</sup> : retail trade; repair of motor vehicles and motorcycles	4,735	5,090	4,595	4,830	235	5.1
49,50,51,52,53	Transportation and storage	1,890	2,015	2,195	2,065	-130	-5.9
55, 56	Accommodation and food service activities	1,060	1,050	1,075	955	-120	-11.2
58, 59, 60	Publishing, audiovisual and broadcasting activities	205	200	285	330	45	16.1
61	Telecommunications	115	95	160	90	-70	-43.4
62, 63	IT and other information services	580	875	1,020	1,180	155	15.4
64, 65, 66	Financial and insurance activities	9,845	8,220	7,480	7,855	375	5.0
68	Real estate activities	225	360	380	590	210	54.6
69,70, 71	Legal, accounting, management, architecture, engineering,	2,310	2,380	2,885	2,170	-715	-24.8
72	Scientific research and development	160	230	245	260	20	7.5
73, 74, 75	Other professional, scientific and technical activities	205	235	220	210	-10	-4.5
77,78,79,80,81,82	Administrative and support service activities	2,100	1,925	1,915	2,645	735	38.3
85	Education	395	445	485	420	-65	-13.3
86, 87, 88, 90, 91, 92, 93, 94, 95, 96, 97, 98, 99	Other Services <sup>2</sup>	35	40	170	135	-35	-20.0
	<b>Total Services</b>	<b>23,860</b>	<b>23,145</b>	<b>23,105</b>	<b>23,735</b>	<b>630</b>	<b>2.7</b>

Notes:

1. Wholesale figures include the wholesale of agricultural products, fish and crustaceans & molluscs.
2. 'Other Services' includes the following activities: Health and other community activities, social and personal service activities.
3. Industry grouping are based on the Industrial Classification of the reporting company.
4. All % change calculations are based on unrounded data

### 3. Total rest of UK and International exports

**Table 6: Total exports (Rest of UK and International Exports) by industry (£million), 2010 – 2013**

		£ million					
SIC 2007 Division		2010	2011	2012	2013	2012-2013 change	2012-2013 % change
	<b>Total rest of UK and international exports</b>	<b>67,300</b>	<b>70,080</b>	<b>70,990</b>	<b>74,055</b>	<b>3,065</b>	<b>4.3</b>
1, 2, 3	Agriculture, Forestry and Fishing	1,015	1,020	1,050	840	-210	-20.1
5,6, 7,8,9	Mining and Quarrying	4,130	4,125	3,935	4,005	70	1.8
	<b>Manufacturing</b>						
	<i>Manufacture of...</i>						
10, 11, 12	Food products, beverages and tobacco products	7,795	8,535	9,015	9,300	285	3.2
11.01	<i>Of Which Distilling, rectifying and blending of spirits</i>	4,090	4,870	4,960	4,985	30	0.6
13, 14, 15	Textiles, wearing apparel, leather and related products	545	600	625	615	-10.0	-1.5
16, 17, 18	Wood and paper products; printing and reproduction of recorded media	1,410	1,285	1,280	1,265	-10.0	-0.9
19, 20	Coke, refined petroleum and chemical products	4,970	5,860	5,415	5,705	290.0	5.3
21	Basic pharmaceutical products and pharmaceutical preparations	620	585	620	565	-55.0	-8.8
22, 23	Rubber and plastic products, and other non-metallic mineral products	1,065	1,210	1,215	1,280	65.0	5.3
24, 25	Basic metals and fabricated metal products, except machinery and equipment	1,240	1,155	1,290	1,235	-55.0	-4.3
26	Computer, electronic and optical products	2,075	2,075	2,155	2,255	100.0	4.6
27	Electrical equipment	525	560	470	540	70.0	15.2
28	Machinery and equipment NEC	1,580	1,510	1,750	2,395	645.0	36.8
29, 30	Transport equipment	2,445	2,255	2,460	2,375	-90.0	-3.6
31, 32	Other manufacturing: including furniture	280	295	340	320	-20.0	-5.9
33	Repair and installation of machinery and equipment	795	855	930	1,025	95.0	10.0
	<b>Total manufacturing</b>	<b>25,340</b>	<b>26,785</b>	<b>27,575</b>	<b>28,880</b>	<b>1,305</b>	<b>4.7</b>
35, 36, 37, 38,							
39	Utilities	3,540	5,075	5,255	5,940	685	13.0
41, 42, 43	Construction	1,455	1,395	1,420	1,415	-5	-0.3
	<b>Services</b>						
45, 46, 47	Wholesale <sup>1</sup> retail trade; repair of motor vehicles and motorcycles	5,980	6,510	6,125	6,180	50	0.9
49,50,51,52,53	Transportation and storage	2,660	2,785	2,850	2,975	125	4.3
55, 56	Accommodation and food service activities	1,335	1,330	1,365	1,235	-130	-9.6
58, 59, 60	Publishing, audiovisual and broadcasting activities	280	280	355	375	20	5.4
61	Telecommunications	325	300	270	345	75	26.9
62, 63	IT and other information services	1,100	1,355	1,555	1,680	125	8.1
64, 65, 66	Financial and insurance activities	11,265	9,845	8,850	9,135	285	3.2
68	Real estate activities	265	390	410	635	225	54.0
69,70, 71	Legal, accounting, management, architecture, engineering, technical testing and analysis activities	3,815	3,915	4,600	4,040	-560	-12.2
72	Scientific research and development	500	610	650	760	110	17.2
73, 74, 75	Other professional, scientific and technical activities	395	460	455	405	-45	-10.1
77,78,79,80,81							
,82	Administrative and support service activities	2,875	2,780	2,910	3,855	945	32.5
85	Education	845	960	1,035	1,040	5	0.3
86,87,88,90,							
91,92,93,94,95							
,96,97,98,99	Other Services <sup>2</sup>	180	165	325	320	5	-2.1
	<b>Total Services</b>	<b>31,815</b>	<b>31,680</b>	<b>31,755</b>	<b>32,975</b>	<b>1,220</b>	<b>3.8</b>

Notes:

1. Wholesale figures include the wholesale of agricultural products, fish and crustaceans & molluscs.
2. 'Other Services' includes the following activities: Health and other community activities, social and personal service activities.
3. Industry groupings are based on the Industrial Classification of reporting company.
- 4.. All % change calculations are based on unrounded data

The combined value of international and rest of UK exports in 2013 (excluding oil and gas) are provisionally estimated at £74.1 billion, £33.0 billion is attributable to service sector companies and £28.9 billion is attributable to manufacturing sector companies. The increase in total exports of £3.1 billion since 2012 is largely due to a rise in the service sector of £1.2 billion and a rise of £1.3 billion in the manufacturing sector.

## 4. Exports by Size of Company

### 4.1 International Exports by size of company

**Table 7: Total International Exports by Broad Industry Sector and Size of Company, 2010 – 2013**

	£ million					
	2010	2011	2012	2013	2012-2013 change	2012-2013 % change
<b>Primary<sup>2</sup></b>	1,530	1,530	1,315	1,365	50	3.7
Large	830	850	725	850	125	17.5
Medium	500	415	415	405	-5	-1.8
Small	195	265	175	105	-70	-39.9
<b>Production<sup>3</sup> &amp; Construction</b>	13,610	15,555	15,940	17,185	1,245	7.8
Large	9,300	10,645	10,405	10,985	580	5.6
Medium	3,410	3,860	4,305	5,275	975	22.6
Small	900	1,050	1,230	920	-305	-24.9
<b>Services</b>	7,955	8,535	8,650	9,235	590	6.8
Large	3,115	3,615	3,350	3,525	175	5.2
Medium	1,705	1,835	2,020	2,195	175	8.6
Small	3,135	3,085	3,275	3,515	240	7.3
<b>Total Exports<sup>4</sup></b>	<b>23,165</b>	<b>25,715</b>	<b>26,015</b>	<b>27,875</b>	1,860	7.2
<b>Total Large</b>	13,245	15,110	14,485	15,365	880	6.1
<b>Total Medium</b>	5,620	6,110	6,740	7,880	1,140	16.9
<b>Total Small</b>	4,235	4,400	4,680	4,545	-135	-2.9

Notes:

1. Company size: Small: <50 employees; Medium: 50-249 employees; Large: 250+ employees.

2. Includes Agriculture, Forestry & Fishing, Mining, Quarrying & Extraction of Petroleum. Excludes the value of oil & gas extracted from the UK Continental Shelf, see Notes.

3. Includes manufacturing and electricity/gas/water supply.

4. Includes some companies with exports but no reported employment details.

5. All % change calculations are based on unrounded data

Larger companies employing more than 250 employees export the most, estimated at £15.4 billion in 2013. Large companies account for 55% of all international exports. The Production and Construction sector is the largest sector of international exports and this increased international exports by £1.2 billion, of which £580 million is attributed to larger companies.

Medium sized companies increased international exports by £1.1 billion (17%) since 2012. Small sized companies decreased international exports marginally over the year by £135 million (3%).

The concentration of international exports is skewed with around 30 per cent of international exports attributable to around 10 businesses; 50 per cent of international exports attributable to around 50 businesses, and 60 per cent of international exports attributable to around 100 businesses.

## 4.2 Rest of UK Exports by size of company

**Table 8: Total Rest of UK Exports by Broad Industry Sector and Size of Company, 2010 -2013**

£ million

	2010	2011	2012	2013	2012-2013 change	2012-2013 % change
<b>Primary<sup>2</sup></b>	3,525	3,495	3,540	3,370	-165	-4.7
Large	2,680	2,435	2,570	2,245	-325	-12.6
Medium	295	400	420	500	85	20.3
Small	550	660	550	625	75	13.3
<b>Production<sup>3</sup> &amp; Construction</b>	16,725	17,700	18,310	19,050	740	4.0
Large	11,540	12,240	12,460	13,085	630	5.0
Medium	3,715	3,810	4,155	4,440	280	6.8
Small	1,470	1,645	1,695	1,525	-170	-10.0
<b>Services</b>	23,860	23,145	23,105	23,735	630	2.7
Large	14,630	12,770	12,580	12,340	-240	-1.9
Medium	4,030	4,820	4,700	4,870	170	3.6
Small	5,200	5,555	5,830	6,530	700	12.0
<b>Total Exports<sup>4</sup></b>	<b>44,135</b>	<b>44,365</b>	<b>44,975</b>	<b>46,175</b>	<b>1,200</b>	<b>2.7</b>
<b>Total Large</b>	28,845	27,445	27,610	27,670	65	0.2
<b>Total Medium</b>	8,040	9,030	9,275	9,810	535	5.8
<b>Total Small</b>	7,220	7,865	8,075	8,680	605	7.5

Notes:

1. Company size: Small: <50 employees; Medium: 50-249 employees; Large: 250+ employees.

2. Includes Agriculture, Forestry & Fishing, Mining, Quarrying & Extraction of Petroleum. Excludes the value of oil & gas extracted from the UK Continental Shelf.

3. Includes manufacturing and electricity/gas/water supply.

4. Includes some companies with exports but no reported employment details.

5. All % change calculations are based on unrounded data

Larger companies employing more than 250 employees export the most to the rest of the UK, estimated at £27.7 billion in 2013, this accounts for 60 per cent of all rest of UK exports.

The service sector is the largest sector of rest of UK exports estimated at £23.7 billion, and this sector increased by £630 million since 2012. The smallest sized companies had the largest rise in this sector of £700 million (12%) since 2012.

Larger sized companies increased in rest of UK exports by £65m (0.2%) since 2012. Small sized companies increased in rest of UK exports by £605 million (7.5%) since 2012.

## 5. Respondents Comments

Two hundred and fifty nine companies provided a commentary within the survey form. These comments were broadly categorised into six themes.

**Table 9: Respondents Comments**

	<b>No. of responses</b>
Survey not relevant	62
Do not export	51
Accounting issues	26
Issue with Splitting Scotland figures from rUK	19
Organisational structure of the company	8
Request electronic facility to submit form	7
Other	86

The most common comment was that the survey was irrelevant to their business with 62 comments. In some cases this may be due to a misunderstanding of the definition of exports particularly for the service sectors and for business from Scotland to the rest of UK. Some of those who indicated they did not export supplemented their comment with the observation that their products were unsuitable for international trade. Others indicated that often their customers subsequently exported their goods. A number of companies who thought the survey irrelevant requested to be removed from future surveys.

Comments relating to organisational structure of the company refer to situations where companies are part of large international corporations, possibly functioning as a subsidiary or a franchise operation within Scotland. The Scottish part of the business may not know the sales figures or be able to split Scottish figures from the UK company account or be able to influence the company strategy for exporting.

Nineteen companies mentioned how difficult it was to split Scottish sales from UK sales or had difficulty determining visitor's normal place of residence (particularly for the retail and hospitality sectors). For those companies having difficulty splitting Scottish sales from UK sales, this was mostly because accounting was done at a UK level. Other accounting issues included their financial years not matching calendar years.

Other comments included suggesting that the data could be obtained from other government departments; complimenting or complaining about the survey; describing the company's specific business; indicating business ceased trading; requesting that they be removed from future surveys and seeking contact with Scottish Enterprise or Government officials. Where contact details were supplied these were passed directly to Scottish Development International.

## 6. Comparability of Scottish International Exports

### 6.1 Sources of Export Statistics for Scotland

**Fig 4: Sources of export statistics for Scotland**

**Global Connections Survey (SGCS)** estimates value of exports in nominal terms (i.e. not adjusted for inflation). The SGCS is the only exports survey covering all sectors of the Scottish economy, including both goods and services.

Two further statistical publications present Scottish International exports for manufactured goods only:

**HM Revenue & Customs (HMRC) quarterly Regional Trade in Goods Statistics** provide a regional breakdown of International imports and exports of goods from regions of the UK. The values are expressed in nominal terms. Information is also provided on a commodity basis compared with the GCS which is presented by industry.

[https://www.uktradeinfo.com/index.cfm?task=td\\_regstats&hasFlashPlayer=true](https://www.uktradeinfo.com/index.cfm?task=td_regstats&hasFlashPlayer=true)

**Index of Manufactured Exports (IME)** is a quarterly SG publication. IME is a short term economic indicator derived from the Office of National Statistics Monthly Business Survey returns for manufacturing businesses located in Scotland.

The IME is deflated to remove the impact of price changes and adjusted for any regular seasonal effects and so reflect growth in international goods sales from Scottish manufacturing businesses in real (constant-price, or volume) terms. Information is classified by industry.

<http://www.scotland.gov.uk/Topics/Statistics/Browse/Economy/Exports/IMEIntroduction>

As this information is not available in cash prices it cannot be directly compared to Scotland's Global Connections Survey or the HMRC Regional Trade in Goods Statistics.

**Scottish National Accounts Project (SNAP)** Quarterly National Accounts publication provides a further estimate of exports from Scotland.

This publication provides users with a number of key macroeconomic statistics for Scotland, including Gross Domestic Product (GDP) measured using output, income and expenditure approaches, estimates of UK extra-regio activities attributable to Scotland, household accounts, and public sector revenues.

SNAP provides an estimate of Scottish exports and imports to and from the rest of the world at current prices and Scottish exports to the rest of the UK.

<http://www.scotland.gov.uk/Topics/Statistics/Browse/Economy/QNA2013Q1>

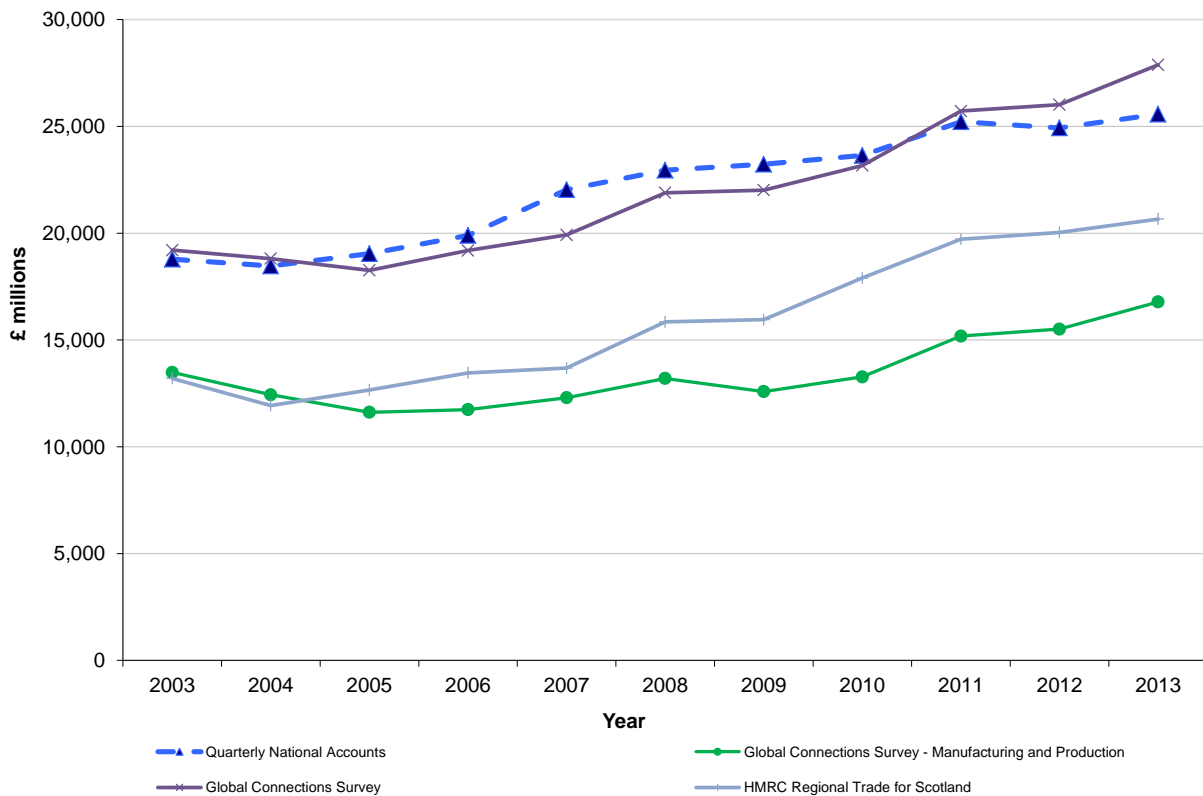
## 6.2 Global Connections compared with HMRC and SNAP

HMRC statistics only measure trade in goods and do not include exports related to services. Therefore HMRC RTS is only broadly comparable with the Manufacturing and Production Industry sectors from the GCS estimates.

Since 2005, the GCS Manufacturing and Production data have been lower than the HMRC Regional Trade figure for Scotland, although both series follow a similar pattern over time.

The Quarterly National Accounts (QNA) cash price value is lower than the total GCS estimate of exports. The QNA estimate also shows a decline in exports between 2011 and 2012 compared with the GCS, which showed an increase in this period. In 2012 to 2013 the QNA shows a more modest increase compared with the GCS.

**Chart 3 Scottish International Exports 2003 to 2013**

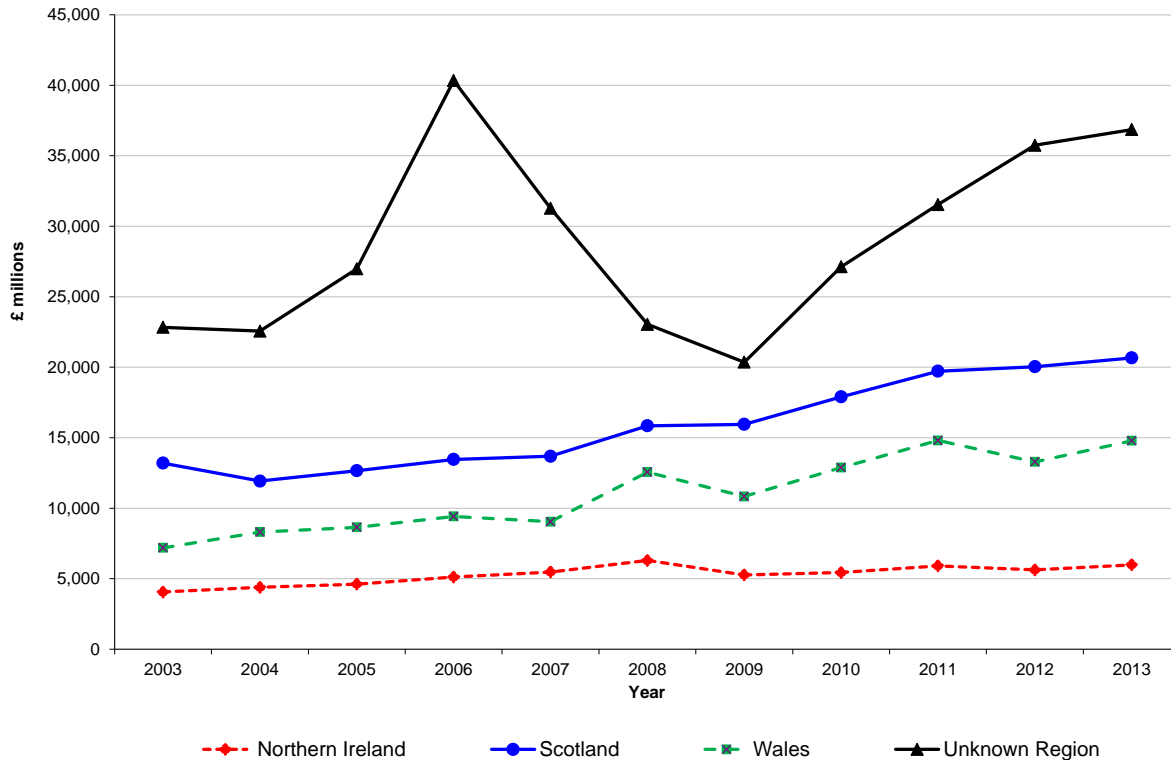


Source: Global Connections Survey, HMRC, Scottish Quarterly National Account Project

### 6.3 Regional HMRC Regional Trade in Goods

Across the UK devolved nations ,the HMRC Regional Trade in Goods Statistics show an annual increase in all UK devolved nations.

**Chart 4 HMRC UK Regional Trade in Goods 2003 to 2013**



Source: HMRC Regional Trade Statistics

HMRC RTS present some export information in an ‘Unknown region’ in cases where there is an absence of a strong case to allocate value of goods to any one region.

An example of this is where oil is processed on rigs in the North Sea and dispatched directly to other countries, the oil does not enter the UK and therefore does not obtain a regional coding. This category is significant in terms of the value of trade amounting to £3.9 billion of exports to the EU for 2004. This category applies only to the movements of oil to other EU countries, and does not apply to imports of oil to the UK or exports of oil to non-EU countries.

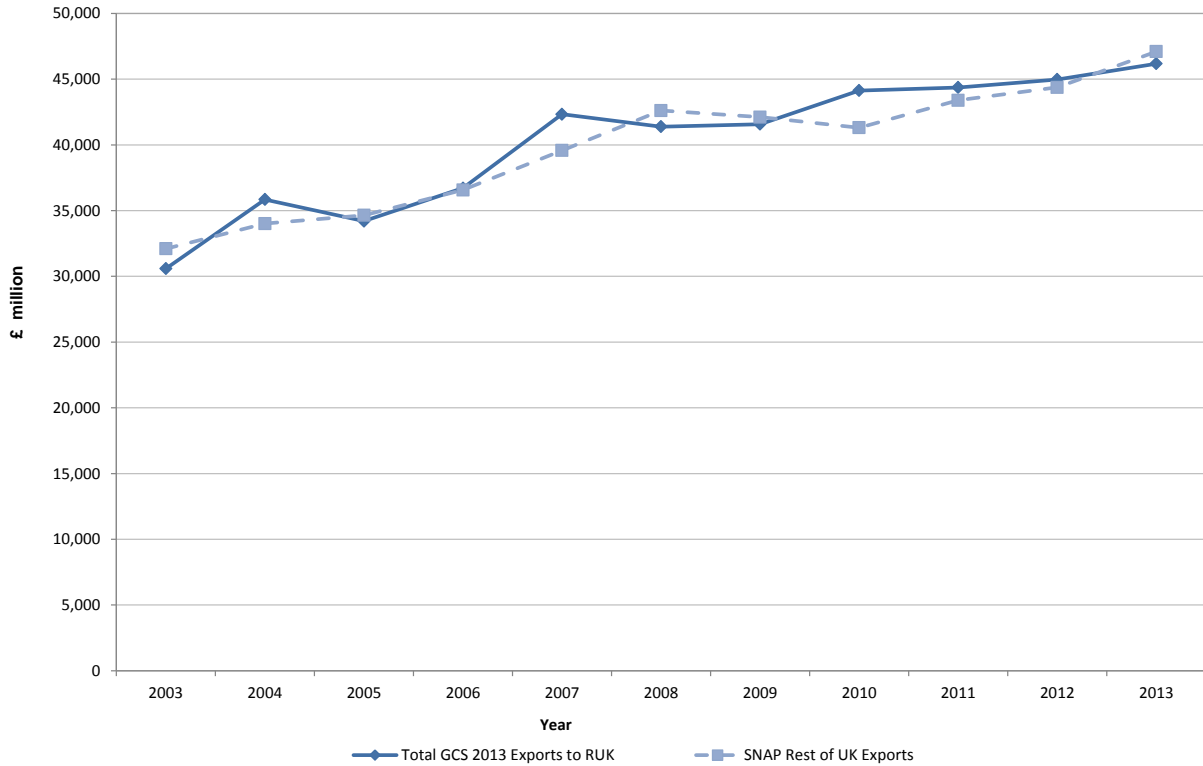
There are also a number of traders who act within the UK on behalf of foreign companies overseas, operating as ‘ghost presences’. The RTS system categorises this ghost trade as ‘Unknown region’. Further information can be obtained from the methodology used by HMRC <https://www.uktradeinfo.com/pagecontent/RTSdocuments/rtsMethodsrevision2007v3.pdf>

In 2013 the ‘Unknown region’ represented £36.9 billion, almost 2 times the value attributed to Scotland £20.0 billion and 12 per cent of the total UK exports figure for 2013 of £299 billion.

## 6.4 Rest of UK Exports

The Scottish National Accounts Project (SNAP) also provides an estimate of rest of UK exports. These results are modelled estimates compared with the survey based estimates from company responses to the Global Connections Survey.

**Chart 5 Rest of UK exports from SNAP and GCS 2003 to 2013**



Source: Quarterly National Accounts Q2 2014, Global Connection Survey 2013

The Quarterly National Accounts (QNA) estimates compared with Global Connection have been similar in each of the years back to 2003. Developing estimates of Scottish exports (and imports) within Scotland's National Accounts is a key objective of QNA in the year ahead and further consultation with users will take place in due course.

## **7. Background notes**

### **7.1 Sources and Methodology**

#### **7.1.1 Global Connections Survey Data collection**

These statistics have been prepared by the Office of the Chief Economic Adviser in collaboration with Scottish Development International. We would like to thank all of the companies that responded to the survey and all those who have been involved in the survey for their help and advice including: Scottish Development International and Highlands & Islands Enterprise.

A representative sample of 5,500 businesses operating in Scotland were invited to participate in this voluntary survey, and responses (including nil responses) were received from around 1,900 companies. Companies are selected from a Scotland extract of UK Inter Departmental Business Register (sourced from Office for National Statistics) which along with address information also supplies employment and turnover data.

The most recent results should be treated as provisional and may be subject to future revisions. The survey results are supplemented with data from UK surveys carried out by the Office for National Statistics (ONS) and administrative sources.

#### **7.1.2 Other sources used in the Global Connection Survey**

Information supplied in response to the survey is checked with other available sources including:

- UK Office for National Statistics (ONS)
- Monthly Business Survey (Production and Services),
- ONS UK Monthly Business Survey – Retail Sales Inquiry,
- ONS Annual International Trade in Services and
- ONS Annual Business Survey.

Information is also used in aggregate industry form from:

- HMRC Overseas Trade Statistics is used for Scottish Whisky information.
- Department of Energy and Climate Change publication known as the Digest of UK Energy Statistics (DUKES), rest of UK export energy estimates
- Fishing export information (direct lands of fish abroad) is provided by the Scottish Government Marine Statistics branch.

The Office for National Statistics Statement of Administrative Sources can be found here <http://www.ons.gov.uk/ons/guide-method/the-national-statistics-standard/code-of-practice/statement-of-administrative-sources/index.html>

#### **7.1.3 Banking Sector**

Information on exports for the banking sector until 2010 were based on export sales information provided by the Council for Scottish Clearing banks. The Council for Scottish Clearing banks also provided a split of International sales and sales to the Rest of UK. For 2011 to 2013 the information is based on a Scottish Government collection

of total sales of the largest organisations in this sector. Research is being carried out within the Office of the Chief Economic Adviser (OCEA) to continue to review and improve estimates of exports from the financial services sector. This may result in future changes to estimates in this sector.

#### **7.1.4 Whisky estimates**

Estimates of international Exports are sourced from HMRC Overseas Trading Statistics based on the export value for Scotch Whisky Commodities reported to HMRC. Commodity code include for 2002-2010 (22083032, 22083038, 22083052, 22083058, 22083072, 22083078). For 2011-2013 (22083030, 22083041, 22083049, 22083061, 22083069, 22083071, 22083079).

## **7.2 Definitions**

### **7.2.1 Industrial Classification**

This publication provides exports for companies classified by the UK Standard Industrial Classification of economic activities 2007. This publication use the UK Standard Industrial Classification (SIC) of economic activities 2007 to classify the industry of the reporting company. The 2007 Classification system was used for the first time in the 2011 results. Prior to this results were based on the UK SIC 1992 and 2003.

The Inter Departmental Business Register used for drawing the sample provides dual SIC 2003 and SIC 2007 coding. However business activity in Scotland varies from that specified for the UK and the companies' responses to the Global Connections Survey allows specific Scottish activity to be identified. The Global Connections Survey 2010 results were remapped and an impact document was provided to alert users to the changes in the 2011 survey.

<http://www.scotland.gov.uk/Topics/Statistics/Browse/Economy/Exports/GCSIntroduction/GCSImpactSIC2007>

Throughout the commentary in this publication: Standard Industrial Classification 5-43 are classed as 'Production and Construction' Industries, SIC 10-33 are classed as 'Manufacturing' and SIC 45-99 are classed as 'Services' Industries.

### **7.2.2 Coverage of Industry**

In accordance with National Accounting principles, total Scottish exports do not include any exports of oil and gas extracted from the UK continental shelf, and so exclude companies classified as Standard Industrial Classification (SIC) 2007 6.1 and 6.2. This is consistent with the approach taken in all Scottish economic statistics and is consistent with the European System of Accounts (ESA 95) conventions and UK National Accounts principles, these are not allocated to any one region of the UK. Exports of services provided to the oil and gas industry are included under SIC2007 9.1 Support Activities for petroleum and natural gas extraction, 9.9 support activities for other mining and quarrying and SIC 2007 71 Architectural and engineering activities.

### **7.2.3 Regional and country estimates industry coverage**

Destination estimates exclude SIC2007 36 (water collection, treatment and supply), SIC2007 37 (sewerage), SIC2007 39 (remediation activities and other waste management services), SIC2007 50 (water transport), SIC2007 51 (air transport), SIC2007 64 (financial services) and SIC2007 65 (insurance and pensions). This is due to a lack of reliable company information for these industries. The total for these is shown as unallocable in table 3. Therefore, rankings of individual countries should be treated as indicative.

## **7.3 Interpretation and use of data**

### **7.3.1 Interpretation of time series**

The Global Connection Survey links the responses of business in one year with previous years. This is part of the imputation methodology. However it should be noted when interpreting changes on an industry basis (Tables 2, 5 & 6) some companies may have moved industry group between years. The Global Connections survey minimises the impact of this and takes measures to correctly code companies consistently across years.

When considering time series of exports by business size (Table 7 & 8) it should be noted that some businesses will change size and therefore size category between years. Changes in Standard Industrial classification between years are also relevant to these tables.

### **7.3.2 Country of export**

Country results are subject to a higher degree of sampling error than industry estimates as less information is provided by respondents on country destination. It is important to note that differences in the reported export markets of the companies responding to the survey could affect the year on year changes in the destination estimates, and that ranks of countries with similar exports estimates can change considerably.

Further some companies operate as toll manufacturers indicating a one stop destination in the survey return. Other organisations change markets to increase profitability this also can affect trends across time. It should be noted a small amount of exports remain unallocated.

It is possible exports are further transported to further country destinations as the survey does not collect the final destination of goods or services. The Netherlands is consistently reported as one of the top export destinations from Scotland. However it should be noted chemicals and refined petroleum may be transported to the Netherlands initially but may be further transported elsewhere.

### **7.3.3 Rest of UK Estimates**

Rest of UK exports relate to trade from Scotland to either England, Wales or Northern Ireland. As with International exports, it is possible exports to the rest of UK are further

transported onwards to Interational destination, as the survey does not collect the final destination of goods or services.

Previous articles discussing some of the challenges of estimating UK exports in more detail are available here <http://www.scotland.gov.uk/Publications/2007/07/18083820/8>  
<http://www.scotland.gov.uk/Publications/2005/11/2485808/58104>

## **7.4 Quality**

### **7.4.1 Survey Response Rates**

Over all the sectors the response rate to the business survey element of the Global Connection survey was 34%. Mining and Quarrying sector have the highest response rate at 46% whereas the Financial and Insurance activities sector have the lowest at 23%. Table 10 (in excel tables) provide detailed response rate estimates by SIC 2007 Industry sector.

As outlined in 7.1.2 - 7.1.3 Survey return are checked against other official sources, and supplemented with complete administrative sources of information for relevant sectors, where possible.

### **7.4.2 Revisions with previously published estimates**

Estimates for previous years have been revised largely due to new information provided by companies in the 2013 survey responses which have enabled estimation improvements. The 2013 results are provisional, and may be revised in the future if improved information becomes available.

Previous published estimates are revised as we obtain information on a company. The survey weighting methodology used (to estimate results for the entire population of businesses in Scotland) means previous years estimates will be revised. More details can be found in the methodology section on the web

<http://www.scotland.gov.uk/Topics/Statistics/Browse/Economy/Exports/GCSMethodology>

Table 11 (in excel tables) provides a year by year summary of revisions to previously published estimates.

### **7.4.3 Respondent Burden**

Respondents were asked the length of time and cost involved of completing the GCS survey. 1,383 respondents provided this information. Time information was more frequently provided compared with cost.

86 per cent reported it took less than or equal to 1 hour to complete the form. The maximum time reported was 12 hours and the median was 20 minutes.

Of those respondents who provided a cost, 75 per cent reported it cost their organisation less than or equal to £60 to complete the form. The maximum reported cost to the respondent's business was £1,200. The median reported cost was £25.

Of those respondents who provided both a cost and a time, 67 per cent reported a cost to their organisation of less than or equal to an hourly rate of £80/hour to complete the form. The median cost rate to the respondents business was £50/hour to complete.

Calculating an average cost based on an hourly rate for those respondents providing both cost and time (£97.15) and applying this to those responses that provided a time to complete allows an estimate of burden for those companies who responded. This provides an estimate of total respondent burden which approximates to £95,019.

These are the estimated costs to the respondent's organisations. The cost of printing, distribution, processing and analysis are additional costs for this survey.

**Table 12: Respondent burden**

	Number of responses	Minimum	Maximum	Average	Median	Total
<b>Cost (£s)</b>	795	1	1,200	62.6	25	49,796
<b>Time in minutes</b>	1,383	1	720	42.4	20	58,684
<b>Average cost (£ per hour)</b>	793	0.2	3,000	97.2	50	

## 7.5 Comparability and Coherence

There is no UK survey compares exactly with the Global Connections Survey. HM Revenue & Customs (HMRC) collect the UK's international trade in goods data, which are published as two National Statistics series - the 'Overseas Trade Statistics (OTS) of the UK' and the 'UK Regional Trade Statistics (RTS)'. The OTS is published monthly, providing detailed data for over 9,000 commodities and 200 partner countries. The RTS are published quarterly showing trade at summary product and country level, split by UK regions. There are available from UKTradeInfo website: <https://www.uktradeinfo.com/Statistics/RTS/Pages/default.aspx>

Section 6 of this publication provides charts and commentary comparing the Global Connection Survey Export estimates with other UK and Scottish sources.

Total exports for the UK which combine HMRC Overseas Trade Statistics and the UK International Trade in Services are published by Office for National Statistics.

## 7.6 User engagement

### 7.6.1 Relevance to users

The results of this survey are of interest to government policy makers, politicians, the business community, economic commentators, academics and members of the general public with an interest in the Scottish economy.

International estimates provided here relate to exports to destinations out with the UK. The international exports figure from Table 2 is used in National Indicator “Increase Exports”. Further information on these can be found on the Scotland Performs website <http://www.scotland.gov.uk/About/scotPerforms/indicator/exports>.

This indicator is also used to monitor the Scottish Government target to increase the value of Scottish exports by 50 per cent by 2017, as described in the Government Economic Strategy <http://www.scotland.gov.uk/Topics/Economy/EconomicStrategy>.

The exports information from the survey is used by the Scottish Government in economic modelling and the Scottish National Accounts Project (SNAP). The survey responses also enable Scottish Development International to target their resources and planning to assist companies in Scotland with exporting.

More widely the GCS estimates are utilised by commercial companies, academics and independent researchers.

#### **7.6.2 Feedback from users**

We are aiming to improve the release and associated commentary, We would welcome any feedback you may have and would be particularly interested in knowing how you make use of these data in your work. Please email any comments to:

[exports.statistics@scotland.gsi.gov.uk](mailto:exports.statistics@scotland.gsi.gov.uk)

**Next Publication:**

**January 2016**

## A NATIONAL STATISTICS PUBLICATION FOR SCOTLAND

The United Kingdom Statistics Authority has designated these statistics as National Statistics, in accordance with the Statistics and Registration Service Act 2007 and signifying compliance with the Code of Practice for Official Statistics.

Designation can be interpreted to mean that the statistics: meet identified user needs; are produced, managed and disseminated to high standards; and are explained well.

### Correspondence and enquiries

For enquiries about this publication please contact:

Office of the Chief Economic Adviser

Scottish Government

3<sup>rd</sup> Floor Atlantic Quay

150 Broomielaw

Glasgow G2 8LU

Telephone: 0300 244 1322

e-mail: [gayle.mackie@scotland.gsi.gov.uk](mailto:gayle.mackie@scotland.gsi.gov.uk)

For general enquiries about Scottish Government statistics please contact:

Office of the Chief Statistician, Telephone: 0131 244 0442,

e-mail: [statistics.enquiries@scotland.gsi.gov.uk](mailto:statistics.enquiries@scotland.gsi.gov.uk)

### How to access background or source data

The data collected for this statistical bulletin

may be made available on request, subject to consideration of legal and ethical factors. Please contact [gayle.mackie@scotland.gsi.gov.uk](mailto:gayle.mackie@scotland.gsi.gov.uk) for further information.

### Complaints and suggestions

If you are not satisfied with our service or have any comments or suggestions, please write to the Chief Statistician, 3WR, St Andrews House, Edinburgh, EH1 3DG, Telephone: (0131) 244 0302, e-mail [statistics.enquiries@scotland.gsi.gov.uk](mailto:statistics.enquiries@scotland.gsi.gov.uk).

If you would like to be consulted about statistical collections or receive notification of publications, please register your interest at [www.scotland.gov.uk/scotstat](http://www.scotland.gov.uk/scotstat)  
Details of forthcoming publications can be found at [www.scotland.gov.uk/statistics](http://www.scotland.gov.uk/statistics)

### Crown Copyright

You may use or re-use this information (not including logos) free of charge in any format or medium, under the terms of the Open Government Licence. See:

[www.nationalarchives.gov.uk/doc/open-government-licence/](http://www.nationalarchives.gov.uk/doc/open-government-licence/)