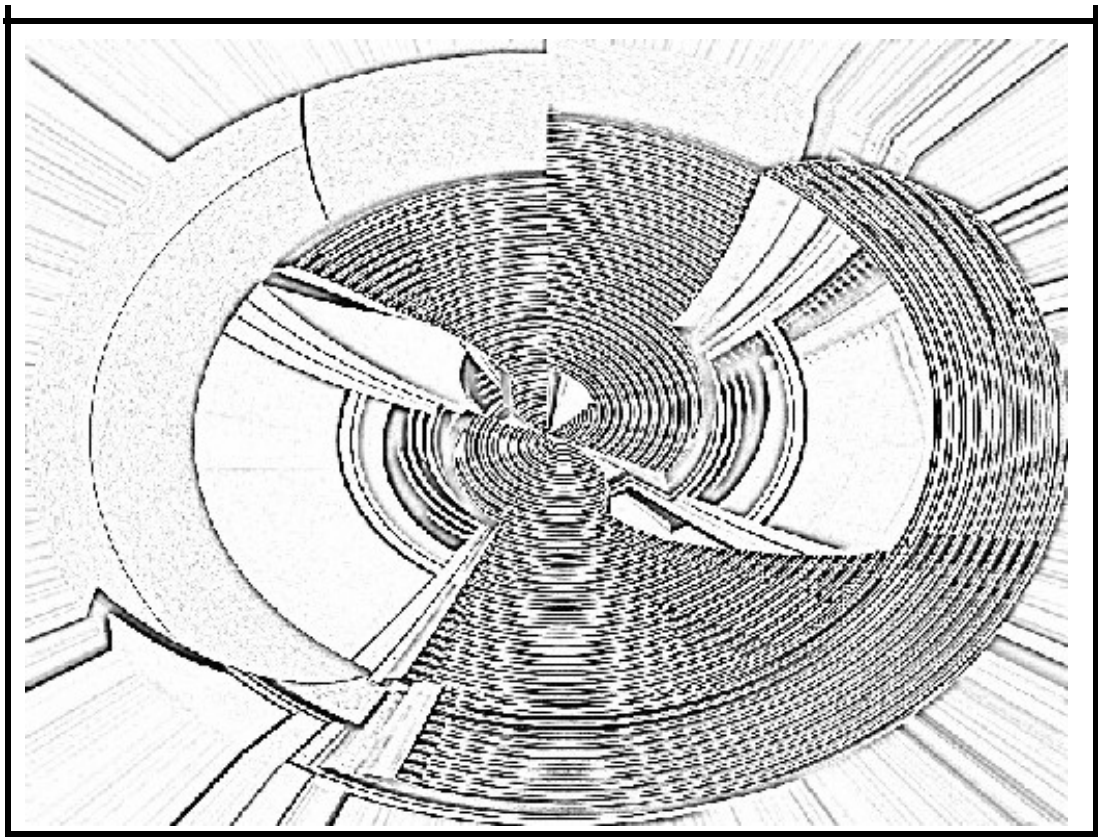


Jewellery Design

Inspired by the

Scottish Parliament Buildings



Jewellery Design

This lesson plan will take you through the stages of designing a piece of jewellery using the Scottish Parliament buildings as your source of inspiration.

Recommended Age: Primary 6-7, Secondary 1/2/3/4
(However this can be adapted)

Aims: To create a piece of jewellery inspired by the Parliament Buildings
To manipulate imagery using Adobe Photoshop
To explore line, tone shape, form and colour

The pack includes the following:

- 1) A brief introduction, the aims and some suggestions of Design Briefs.
- 2) Information on an historical and a contemporary designer.
- 3) A lesson plan titled 'Jewellery design inspired by the Parliament buildings.
- 4) Reference photos.

Design Briefs

It might be worth giving your class a design brief to work from - this makes it more realistic and is a clear set of instructions for pupils to follow. Below is an example of a design brief.

Design Brief

Design a piece of jewellery which could be available in the Scottish Parliament Shop. The piece should consider the environment and should be made from recycled materials. Your chosen materials should reflect the qualities of the building.

Suggested materials:

Brown paper
Foil
Plastic acetate
Wire
Corrugated card
Wood
Metal
Glue
String

A Brief Introduction to Jewellery Design

Jewellery design has been around for hundreds if not thousands of years and has changed and developed throughout the centuries. However, if we look at examples from different periods we can see that as well as new ideas appearing all the time, the same techniques, sources of inspiration and ideas re-occur over and over again.

Contemporary jewellery is an extremely exciting field which explores many new and innovative materials and techniques. It is always a good idea to look at other Artists/Designers who have explored the same subject as you. It lets you see what has come before and what is around now.

A Contemporary designer who is well worth looking at is:

VICKI AMBERY-SMITH

Vikki Ambery-Smith uses architecture as an inspiration for her work. She is famous for her highly detailed metal jewellery, boxes, and condiment sets which have been inspired by Renaissance, Palladian, and Classical Architecture. She uses a variety of materials, including silver, brass and niobium in many different ways, such as scoring and folding, casting and etching as well as many other highly intricate techniques. She also regularly uses photographs supplied by her clients. This highly acclaimed jewellery designer has exhibited all over the world. See this website for further details:

www.ganoksin.com/borisat/nenam/vicki-ambery.htm

An historical Movement which is well worth looking at is: **ART DECO**

Art deco was an innovative design style popular in the 1920s and 1930s. It had sleek shapes, and used zigzags, stepped forms, chevron patterns and the sunburst motif. Art Deco took inspiration from Pharaohs, the Orient, tribal Africa, Cubism, Futurism, ocean liners and machines. Materials included rubies, gold, and pearls as well as plastic, chrome, aluminium and steel. A new luxury metal was platinum and opaque stones, such as coral, jade, onyx and lapis lazuli, were used. Jewellery of the 1920s and 1930s was highly geometric, sleek and streamlined. Costume jewellery became even more popular. Designers to look at include Raymond Templier, Louis Cartier, Rene Lalique, Paul Emile Brandt, and Dunand. Try searching for their work on the internet.

Jewellery Design Inspired by the Scottish Parliament buildings

1. To begin with you need to either:
 - Visit the Scottish Parliament building and take photos
 - Download photos from the website
 - Use one of the photos included with this pack.
2. Choose a photo



3. Now open up Adobe Photoshop and import this picture by going to file>open>then click on your chosen photo
4. You are now ready to manipulate your image in different ways using the following process (see below):
 - 1) Filter > Distort-polar coordinates > Polar to Rectangle
 - 2) Filter > Distort >Twirl 250%
 - 3) Filter > Distort >Zigzag Amount 100% Ridges 4
 - 4) Filter > Distort > Polar Coordinates > Rectangle to Polar

1



2



3

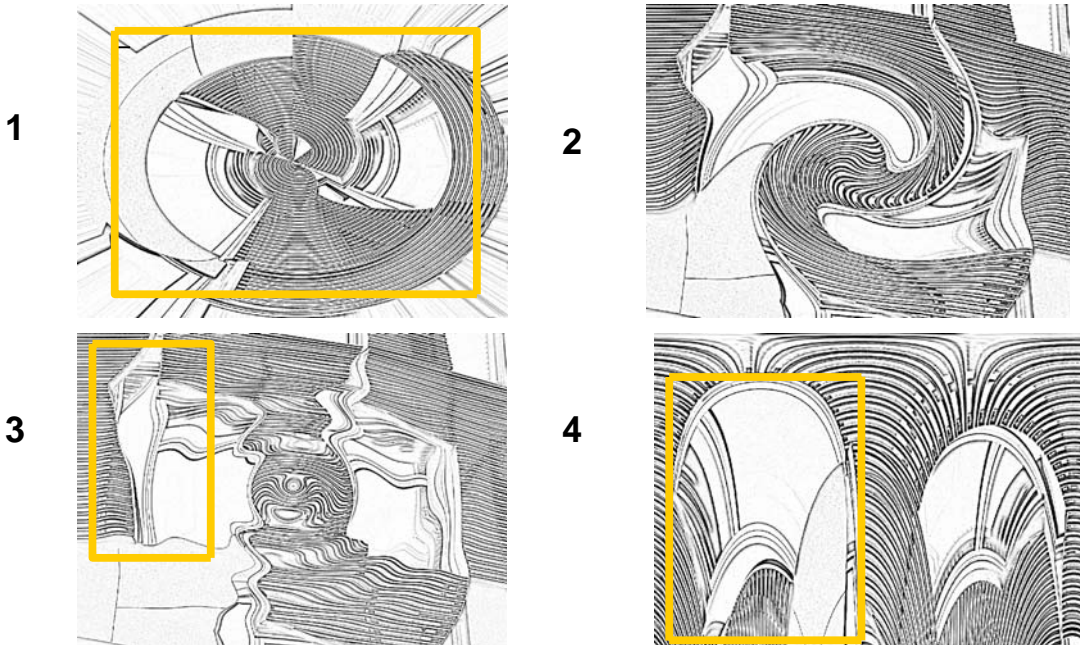


4

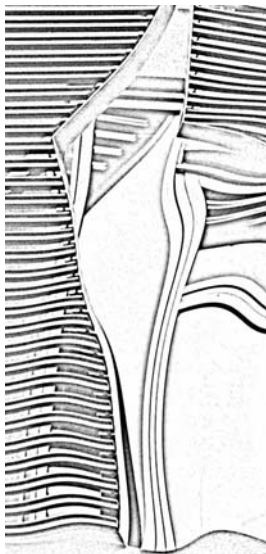


- 5) Simplify one of your photos into a line drawing (see below)
To do this on the computer:

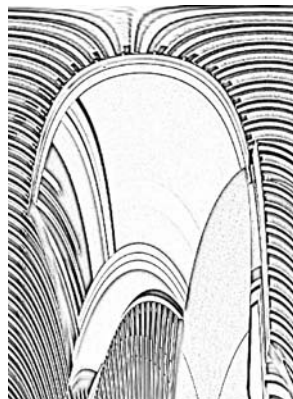
1. Open Photoshop and open the manipulated design you want to use then
2. Select the colour black on the left hand tool box
3. Go to filter > sketch > photocopy (Detail 10 Darkness 10)



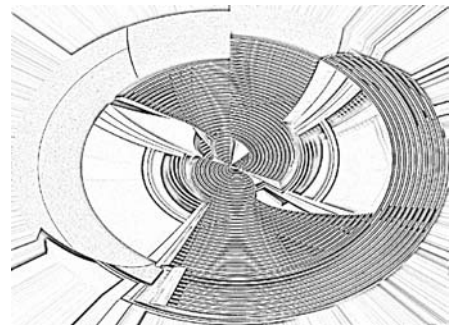
6) You are now ready to start thinking about which part you want to work with depending upon what you want to design for example;



Necklace Pendent

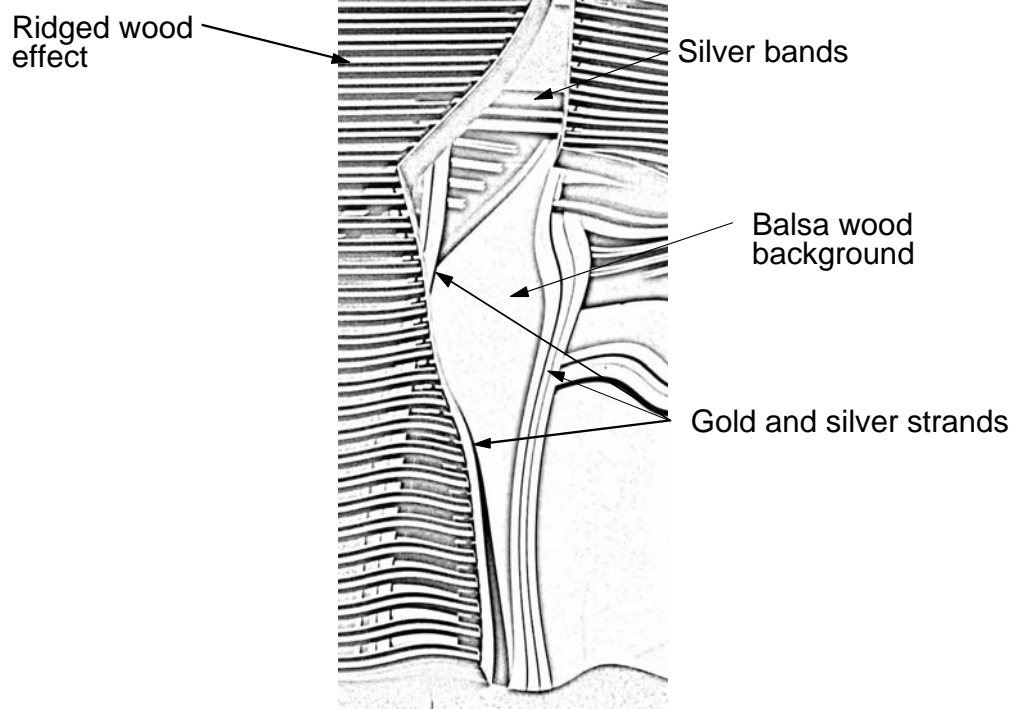


Brooch

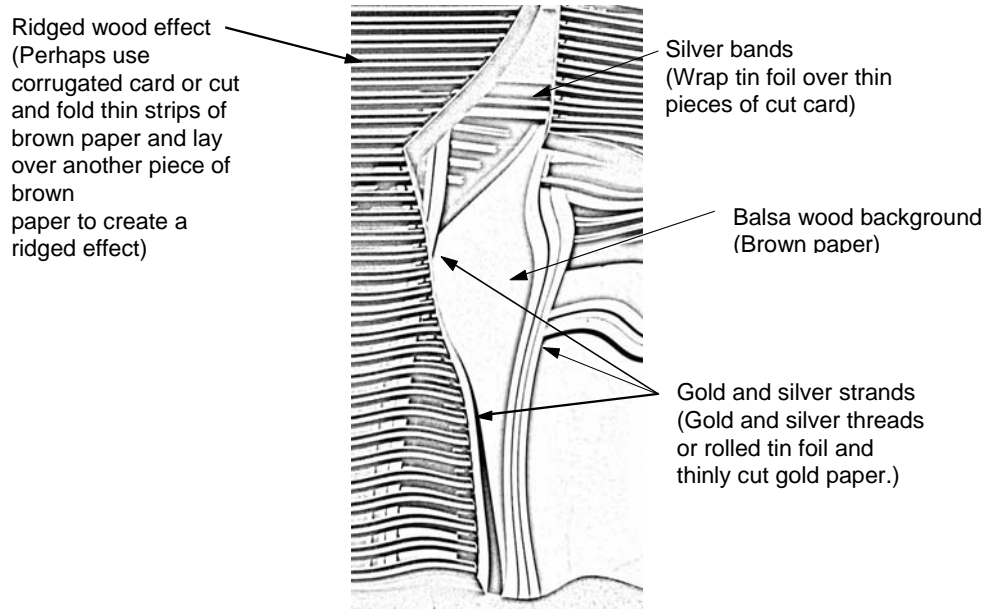


Brooch or Pendent

7) Once you have selected which design you want to work with, you need to start thinking about what materials you want to use to create the desired effect.

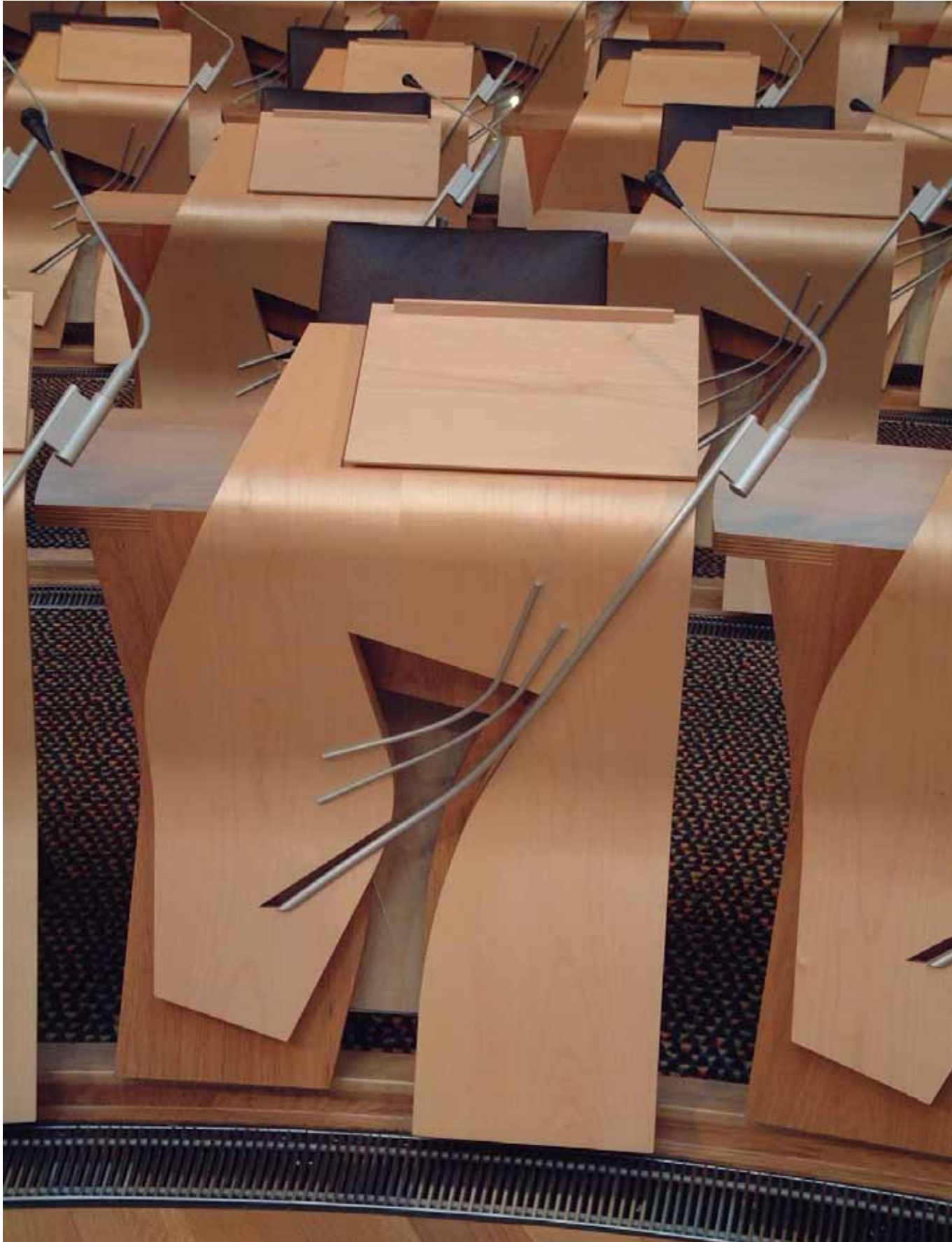


8) Now think about the materials you have collected or need to collect to make a mock up (practise) of the piece. Look at the suggested list on page 2



9) You are now ready (if you want) to have a go at producing 'the real thing' using traditional jewellery making materials - have fun!

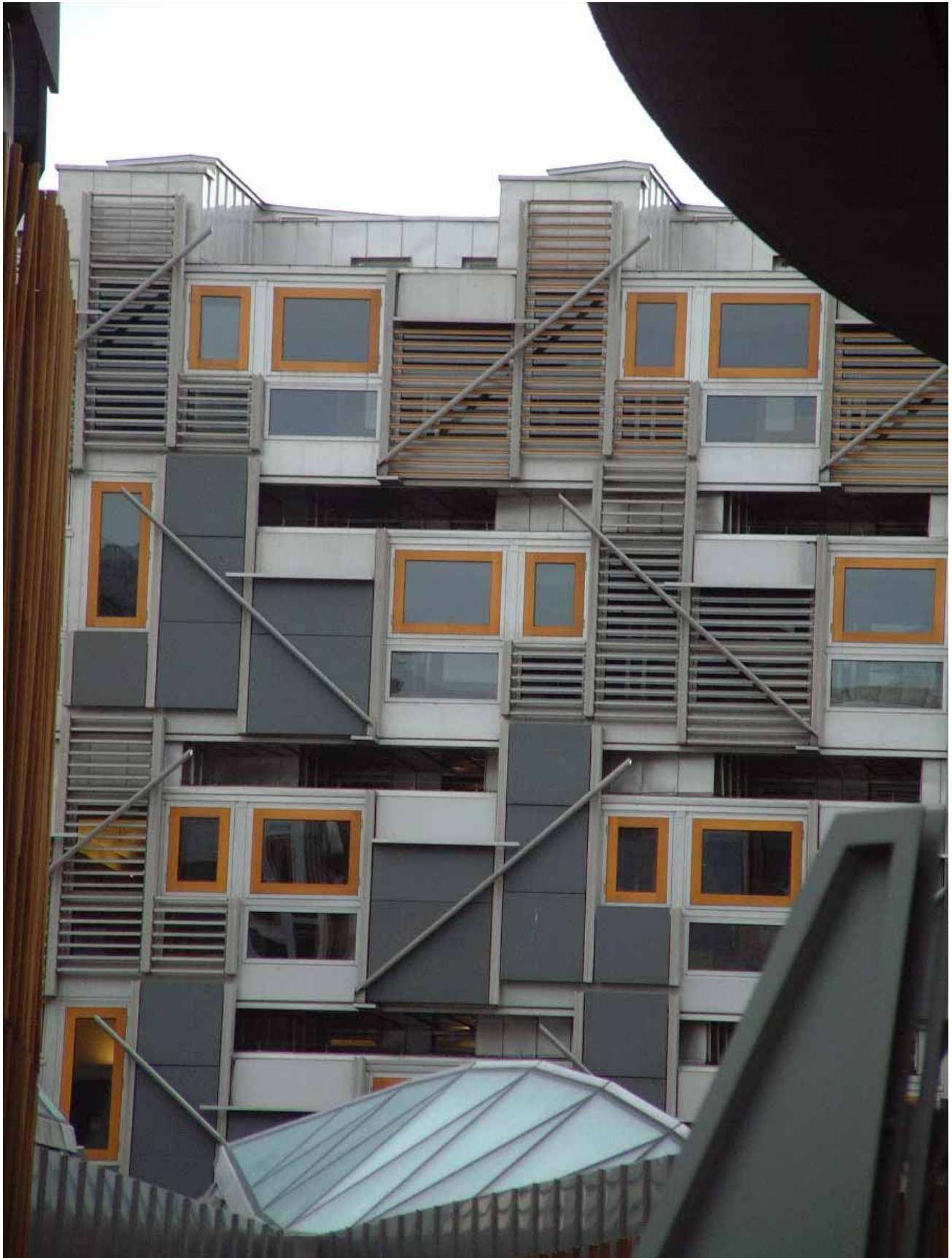
Reference photo A



Reference photo B



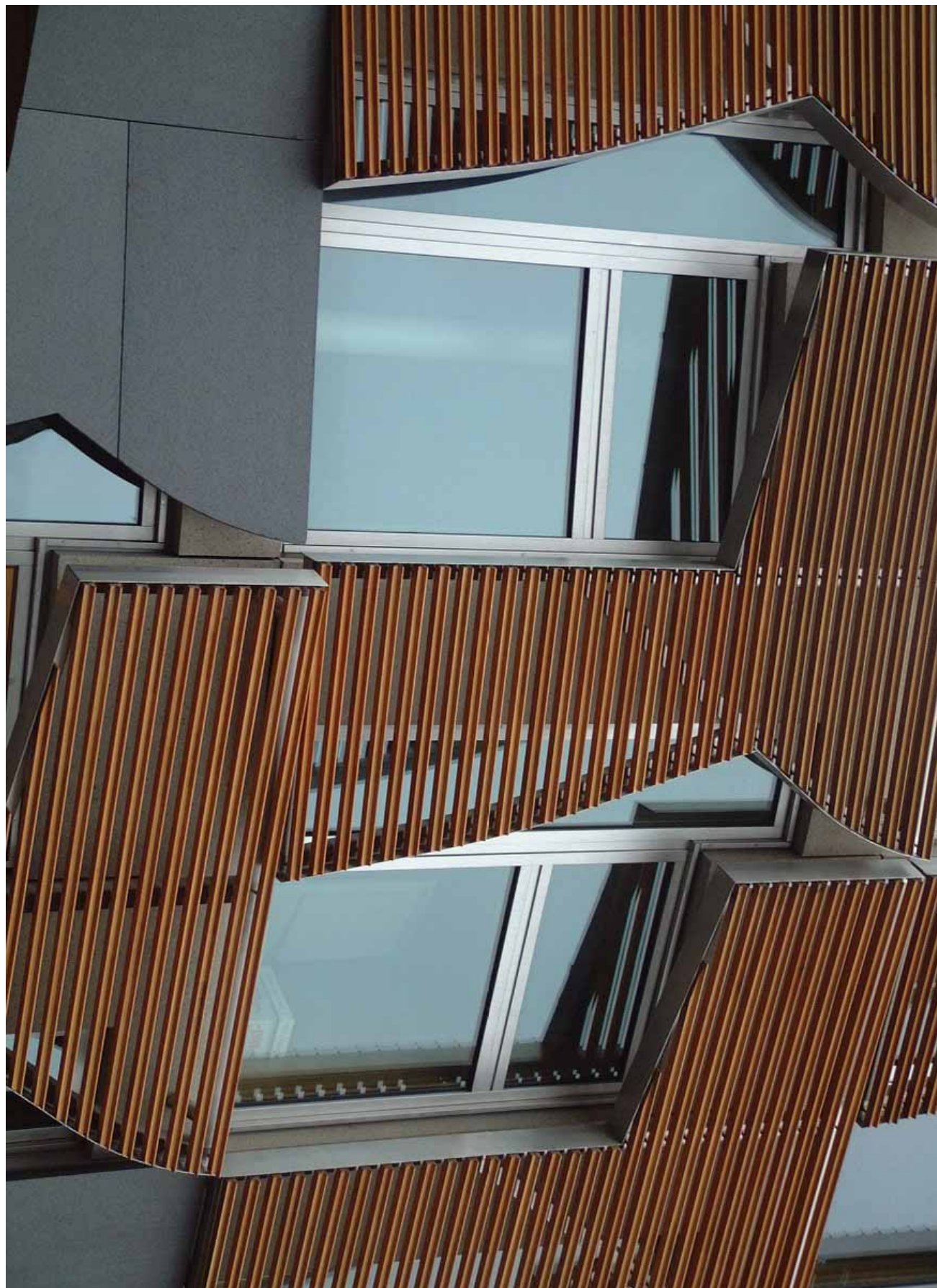
Reference photo C



Reference photo D



Reference photo E



Reference photo F

