

REIMBURSEMENT OF MEMBERS' EXPENSES SCHEME – REVIEW OF REGIONAL OFFICES

Executive summary

1. The SPCB agreed at its meeting on 8 June 2016 that a review of regional office arrangements should be carried out. Specifically, the review was invited to look at the evidence for whether or not the parliamentary regions of Central Scotland, Glasgow and Lothian should be added to those regions where Members were entitled to make application to the SPCB for an additional regional office, where more than one Member is returned from a political party's regional list for that region.
2. A thorough desk-based review was undertaken in September 2011, following a similar request to review the arrangements for regional offices, with a particular emphasis on the West Scotland region.
3. A copy of the original September 2011 report is attached for the SPCB's consideration. Any material changes in the intervening five years to the information contained in that report are highlighted below in this paper.

Issues and Options

4. At present, under the Reimbursement of Members' Expenses Scheme (the Scheme) the regions of Highlands & Islands, Mid Scotland & Fife, North East Scotland, West Scotland and South Scotland are entitled to apply to the SPCB for an additional regional office where more than one Member is returned from a political party's regional list for that region.
5. The SPCB will note from the September 2011 report's conclusion that a successful case was made for the West Scotland parliamentary region to be added to the list of exceptions, given that, as a result of the most recent boundary review, the region had increased in size. The West Scotland region is geographically greater in size than the combined size of Central Scotland, Glasgow and Lothian. Also, due to the geographic nature of the region, straddling the River Clyde, most public transport journeys north – south of the river involve travelling through the city of Glasgow which adds to the travel time.
6. Both the Central Scotland and Lothian parliamentary regions had reduced in size geographically as a result of the most recent boundary review. Given this, the report concluded that there was no case for these regions to be added to the list. Members representing these

regions in previous parliamentary sessions have conducted their parliamentary duties with only the one regional office shared between the regional Members of the same party.

7. In respect of the Glasgow parliamentary region, again the report found it difficult to conclude that the size of the region merited an additional office.
8. A review of the information contained in the September 2011 report has been undertaken to establish whether any material changes have occurred in the intervening period in the Central Scotland, Glasgow and Lothian regions.
9. The Scottish parliamentary constituencies and local authority areas for Central Scotland, Glasgow and Lothian are still the same as in 2011. There are, however, a number of changes to the public transport links, most notably in the Lothian and Central Scotland regions, which have benefitted from the opening of the Borders Railway from Edinburgh to Tweedbank and the North Clyde Line connecting Coatbridge Sunnyside and Bathgate to Edinburgh.
10. The Corporate Body will note that the September 2011 report focussed on the specific geographic factors (size of region, local authority and health board areas, availability of transport and associated journey times for constituents) which might justify an exception to the general principle, agreed by the Parliament in 1999 and endorsed by the Langlands Review in 2008, that regional Members from the same party should share a single regional office in each region. In respect of the Central Scotland, Glasgow and Lothian regions, Members have operated on the basis of a single regional office since the introduction of the Scheme.
11. In addition to these geographic factors, the request from James Kelly MSP invited the SPCB to consider the principles of fairness and consistency in relation to the eight regions.
12. In light of the information gathered in the attached review, the SPCB is invited to consider the request to increase the number of regional offices allowed under the Scheme to two per registered political party for every electoral region in Scotland, where that party has more than one Member in that region. The two remaining options open to the SPCB are:-
 - i. to make no changes. The SPCB may consider that the principle of different treatment for different regions based largely on geographical size is sound and meets the requirements for balance established by Langlands between accessibility and value for money and that the current arrangements best reflect that balance.

- ii. to accept the case for consistency set out in the request and seek to adjust the scheme to allow all regions to have more than one regional office where a registered party has more than one representative in that region. A motion proposed by the SPCB would require to be lodged for consideration by the Parliament.

Resource Implications

13. Resource implications depend on whether (a) the expenses scheme is amended as requested, (b) each party entitled to apply under the amended rules does so and (c) the SPCB grants each request. Should the scheme be amended as requested, each party applies and each request is granted, additional funding of £114,202 per annum would be required to fund the additional offices.

Governance issues

14. The expenses scheme is created, approved and amended by a resolution of the Scottish Parliament. The SPCB has, in line with its statutory role to provide the Parliament with the resources required for the Parliament's purposes, responsibility for the operation of the scheme and ensuring compliance with its terms.

Publication Scheme

15. This paper will be published in line with the SPCB's Publication Scheme.

Decision

16. The SPCB is invited to consider the request (SPCB(2016)Paper 31) to increase the number of regional offices allowed under the Scheme to two per registered political party for every electoral region in Scotland, where that party has more than one Member in that region.

Finance and Security Group
June 2016

REIMBURSEMENT OF MEMBERS' EXPENSES SCHEME – REVIEW OF REGIONAL OFFICES – SEPTEMBER 2011

Introduction

1. The Scottish Parliament has 8 parliamentary regions¹ each of which return 7 Members. Under the Reimbursement of Members' Expenses Scheme, Members of the same registered political party are required to share a regional office within the regions for which they were returned. Due to the geographic size of the Highlands and Islands, Mid Scotland and Fife, North East Scotland and South Scotland regions, Members in those regions may apply to the SPCB for an additional regional office.

2. It has been drawn to the SPCB's attention that some Members have questioned the arrangements for regional offices and have suggested that the provision for an additional regional office should be extended to cover more regions than currently fall under the entitlement.

3. In the light of the representations received, the SPCB agreed at its meeting on 15 June 2011 for a desk based review of these arrangements, noting that any changes to the current arrangements would have to be taken forward by means of a resolution of the Parliament amending the Reimbursement of Members' Expenses Scheme.

Brief History of Regional Office Arrangements

- *8 June 1999* - Following the establishment of the Parliament a resolution was passed on 8 June 1999 making provision for the payment of allowances (expenses) to Members of the Scottish Parliament. The original motion lodged made provision for an office for each constituency or regional Member, however, following the debate an amendment was agreed which provided that Members from the same party, in any one region, would be entitled to only one regional office between them.
- The amendment also provided that in the 3 larger geographical regions, namely the Highlands and Islands, North East Scotland and South of Scotland the SPCB "may determine after inquiry that the regional Members concerned may run one additional office because that is necessary for the regional Members concerned to carry out their Parliamentary duties effectively"
- *16 March 2000* - Subsequently, a series of amendments to the original resolution were agreed by the Parliament on 16 March 2000 following a limited internal review of the operations of the original scheme. One of these changes was to add the Mid Scotland and Fife region to the list of regions where regional Members of the same political party may on

¹ Central Scotland, Glasgow, Highlands and Islands, Lothian, Mid Scotland and Fife, North East Scotland, South Scotland, West Scotland

application to the SPCB be entitled to an additional office. This resolution also required a full review of the expenses scheme to be undertaken by December 2000.

- *15 December 2000* – The review mentioned in the 16 March resolution reported to the SPCB on 15 December 2000. One of the review recommendations was that the then West of Scotland region should also be added to the list. This recommendation was not accepted at that time.
- *20 June 2007* - The SPCB agreed a full scale review of expenses should be conducted to take a 'first principles' approach to determining the support required to enable Members to fulfil their parliamentary and constituency duties. The review was to be conducted by an independent panel under the chairmanship of Sir Alan Langlands.
- *11 March 2008* - The review panel reported to the SPCB on 11 March 2008. In its section of the report covering regional offices the panel concluded "There has to be a balance between the public's accessibility to a democratically elected regional representative and value for money. We certainly see no argument for making regional offices available to each regional Member. On balance, the existing situation which we consider is widely accepted should be maintained. It provides local accessibility to the constituency Member, while also providing a shared base for regional Members".
- *15 December 2009* - In the light of developments in other legislatures relating to expenses, the SPCB commissioned Sir Neil McIntosh to undertake a further examination of the expenses scheme operated in the Scottish Parliament. This examination, which reported to the SPCB in December 2009, did not, however, make any recommendation relating to regional offices.

4. It is also worthwhile noting that in December 2010 the SPCB agreed to cease funding, through the expenses scheme, of 'places of work'. No specific provision had ever been made in any expenses scheme for such places which, historically, were an administrative arrangement to assist Members and to make it easier for staff to work more locally. These were not constituency or regional offices.

5. 'Places of work' had been limited to the West of Scotland and the South of Scotland regions and operated by regional Members from those regions. In the case of the South of Scotland, in addition to an additional regional office being established, Members (of the same party) had also received permission to run 3 additional 'places of work' in the region and in the West of Scotland region one additional 'place of work'. Looking at this afresh the SPCB did not consider that it was within the spirit of the provision for regional offices.

6. Since the general election in May 2011 such 'places of work' have not been funded from the expenses scheme.

Current Arrangements

7. The Reimbursement of Members' Expenses Scheme (expenses scheme) provides at paragraph 4.2.5 that in the West of Scotland, Central Scotland, Glasgow and Lothian regions where more than one Member is returned from a registered political party's regional list those Members are entitled between them only to the reimbursement of office costs for one regional office.

8. Paragraph 4.2.6 of the expenses scheme provides that where in the Highlands and Islands, North East Scotland, South Scotland, or Mid Scotland and Fife regions more than one Member is returned from a registered political party's regional list, the SPCB may, on the written application of all of the Members concerned, determine that they are entitled to reimbursement of office costs in respect of an additional local parliamentary office within the region.

9. The limit on the entitlement of each regional Member to reimbursement of office costs in the circumstances set out in paragraphs 4.2.5 and 4.2.6 of the expenses scheme is calculated in accordance with the following table:-

Number of Regional Members	Percentage of Limit on Office Costs Applicable to a Single Regional Member	
	One Office in the Region (limit per member)	Two Offices in the Region (limit per member)
2	60%	100%
3	47%	80%
4	40%	65%
5	36%	56%

Any limit calculated in accordance with the table above shall be rounded up to the nearest £100.

Scope of this Report

10. This report considers whether or not there is a case for paragraph 4.2.6 of the expenses scheme to be extended to also include West Scotland, Central Scotland, Glasgow and Lothian regions.

Entitlement to an additional regional office

11. The current arrangements are generally based on the geographic size of each parliamentary region. The size of each region also has a considerable impact on the transport arrangements and the ability for Members and constituents to interact on a face to face basis.

12. While in this day and age most communications can be done by electronic means, in writing or by telephone there are many members of the public who wish to engage face to face with their elected representatives. Having an additional regional office in some of the larger regions can therefore assist to some extent with this. Although, it is also the case that regional Members do conduct regular surgeries throughout the respective regions offering constituents the opportunity to meet and discuss issues with Members.

13. It should also be recognised that where provision is made for an additional regional office such offices would be sited in one of the constituencies that makes up that region and this may impact on the constituency Member for that particular constituency.

14. To make a comparison between the regions covered in this report, we have used figures used by The Boundary Commission for Scotland in its first periodic review of parliamentary constituencies and regions. The recommendations of the Boundary Commission formed the electoral arrangements for the Scottish parliamentary general election held on 6 May 2011.

Figure 1 – Regions by Electorates²

Region	Electorate
North East Scotland	540,310
West Scotland	528,680
South Scotland	520,840
Lothian	517,110
Glasgow	493,610
Central Scotland	493,340
Mid Scotland and Fife	490,700
Highlands and Islands	334,720

Figure 2 – Regions by Area

Region	Area Km ² ³
Highlands and Islands	41,258
South Scotland	16,385
Mid Scotland and Fife	9,211
North East Scotland	9,012
West Scotland	2,332
Central Scotland	954
Lothian	873
Glasgow	209

² 2007 electorate figures as used by the Boundary Commission for Scotland

³ Information provided by the Boundary Commission for Scotland

Central Scotland

15. The Central Scotland region covers the Scottish parliamentary constituencies of: Airdrie and Shotts; Coatbridge and Chryston; Cumbernauld and Kilsyth; East Kilbride; Falkirk East; Falkirk West; Hamilton, Larkhall and Stonehouse; Motherwell and Wishaw; Uddingston and Bellshill (see map at Annex 1).

16. With the boundary changes coming into effect for the most recent parliamentary election on 6 May 2011, the Central Scotland region is now the 6th largest in Scotland in terms of electorate – 493,340 (see page 4, figure 1), and also the 6th largest in geographical size at 954 square km (see page 4, figure 2).

17. The new electoral arrangements has resulted in there being one less parliamentary constituency within the Central Scotland region compared to the position before the May 2011 election, with the most significant change being the area covered by the former Kilmarnock and Loudon constituency now forming part of the new South Scotland region. In terms of area, this constituency was the largest in the former Central Scotland region.

18. The Central Scotland region covers 3 local authority areas – Falkirk, North Lanarkshire and South Lanarkshire (part).

The region is primarily more urban with the main population areas including East Kilbride, Hamilton, Motherwell, Airdrie, Coatbridge, Cumbernauld and Falkirk. The region has excellent road networks with the M8, M9, M74 and M80 running through the region together with other main roads such as the A73.

19. Many of the populated areas are on the national rail network (see Annex 2 with

- Stations at Croy, Falkirk and Polmont forming part of the main Edinburgh Waverley – Glasgow Queen Street rail line.
- Stations in Airdrie and Coatbridge on the Glasgow – Edinburgh (via Airdrie/ Bathgate) line
- Stations in Motherwell, Bellshill and Shotts forming part of the Glasgow – Edinburgh (via Shotts) line

20. There is a good network of local bus services servicing the more urban and surrounding areas within the region with companies such as First, Irvine's and Stagecoach operating services. A number of services also link the region with both Glasgow and Edinburgh. However, there are not always direct routes linking some of the more populated areas.

21. The size of the region is reflected in car journey times, at Annex 3. The annex also illustrates a sample of journey times based on an office located in Motherwell, East Kilbride and Falkirk to provide examples using a car, rail and

bus. Direct rail and bus routes can also be convenient in terms of time but where changes are necessary this is reflected in the journey times.

Glasgow Region

22. The Glasgow parliamentary region covers the Scottish parliamentary constituencies of: Glasgow Anniesland; Glasgow Cathcart; Glasgow Kelvin; Glasgow Maryhill and Springburn; Glasgow Pollok; Glasgow Provan; Glasgow Shettleston; Glasgow Southside; and Rutherglen (see map at Annex 4).

23. With the boundary changes coming into effect for the most recent parliamentary election on 6 May 2011, the Glasgow region is now the 5th largest in Scotland in terms of electorate – 493,610 (see page 4, figure 1), and also the smallest in geographical size at 209 square km (see page 4, figure 2).

24. The new electoral arrangements have resulted in there being one less parliamentary constituency within the Glasgow region compared to the position before the May 2011 election. This has been as a result of a decrease in the electorate of Glasgow and the reduction in constituencies has not had any significant bearing on the size of the parliamentary region.

25. The Glasgow parliamentary region covers 2 local authority areas – Glasgow and South Lanarkshire (part).

26. The parliamentary region is urban in nature with each of the parliamentary constituencies within the region having a local connection with that particular part of the city. Glasgow is the hub for all major road networks in the west of Scotland with all parts of the city accessible by road.

27. The area in and around Glasgow has the largest network of suburban railway lines in the UK outside London and the city centre has its own subway underground rail system. Within the city most areas are within easy reach of a railway station with connections made via 2 major hubs at Glasgow Central and Glasgow Queen Street stations (see Annex 2).

28. Glasgow is also well served by a bus network, again with almost all parts of the city easily accessible. First Bus, for example, operates 118 bus routes within the city. Annex 5 provides an illustration of journey times based on offices located in Cathcart, Pollok, Shettleston and Springburn using car, rail and bus.

Lothian Region

29. The Lothian parliamentary region covers the Scottish parliamentary constituencies of: Almond Valley; Edinburgh Central; Edinburgh Eastern; Edinburgh northern and Leith; Edinburgh Pentlands; Edinburgh Southern; Edinburgh Western; Linlithgow; and Midlothian North and Musselburgh (see Annex 6).

30. The electorate of the region is 517,110 which is the 4th largest in Scotland and it forms an area 873km² making it one of the smallest regions (see page 4, figures 1 and 2)

31. While there are still 9 parliamentary constituencies in the Lothian region, the region has decreased in size as a result of the new parliamentary boundaries with the south Midlothian area (between Gorebridge and the Moorfoot hills) which previously formed part of this region now forming part of the South Scotland parliamentary region.

32. The Lothian parliamentary region covers 4 local authority areas – the City of Edinburgh, East Lothian (part), Midlothian (part) and West Lothian.

33. The parliamentary region is primarily urban in area with the more rural areas to be found south of Livingston. The main population areas are the city of Edinburgh, Linlithgow, Livingston, Bathgate, Dalkeith and Bonnyrigg.

34. As part of the central Scotland transport network it is generally well served with the M8 linking the area with the west of Scotland, the M9 linking the area with the north of Scotland and other major roads such as the A68 linking Edinburgh with the borders and the A71 linking the city with the south-west of Scotland and the A70 southwards.

35. Many of the populated areas to the west of and including Edinburgh are on the national rail network (see Annex 2), although there are no rail links at present south of Edinburgh.

- Linlithgow is part of the main Edinburgh Waverley – Glasgow Queen Street rail line
- Armadale, Bathgate, Livingston and Uphall are part of the Glasgow – Edinburgh (via Airdrie/ Bathgate) line

36. There is a good network of local bus services servicing the more urban and surrounding areas within the region with companies such as Lothian Buses, First Bus, and Stagecoach operating services. A number of services also link Edinburgh with the rest of Scotland.

37. Annex 7 provides a sample of journey times based on an office being located in Edinburgh, Armadale, Linlithgow and Dalkeith to provide examples of travel times using a car, rail and bus.

West Scotland Region

38. The West Scotland region covers the Scottish parliamentary constituencies of: Clydebank and Milngavie; Cunninghame North; Cunninghame South; Dumbarton, Eastwood; Greenock and Inverclyde; Paisley, Renfrewshire North; Renfrewshire South; and Strathkelvin and Bearsden (see map at Annex 8).

39. With the boundary changes coming into effect for the parliamentary election on 6 May 2011, the West Scotland region is now the second largest in Scotland in terms of electorate – 528,680.

40. In geographical size, this region is 2,332 square km which is more than the size of the combined Central Scotland, Glasgow and Lothian regions.

41. One significant change to the boundary of the region since the parliamentary election in 2007, and which could have a bearing on any decision taken regarding entitlement to an additional office, is that the region now consists of 10 parliamentary constituencies. Previously it was 9. The area covered by the Cunninghame South constituency now having been moved from the former South of Scotland region to the West Scotland region.

42. The West Scotland region covers 7 local authorities⁴ which is more than the other regions except South of Scotland (which also has 7 local authorities within or part within its boundary).

43. The region is a mix of urban and rural areas with the main population areas including Paisley, Dumbarton, Greenock, Gourock, Helensburgh, Kilwinning, Largs, Irvine, Newton Mearns and Kirkintilloch.

44. In terms of the road network, north of the River Clyde the A82 goes along the west banks of Loch Lomond via Clydebank, Dumbarton and Alexandria. The A814 links the north-west of the region with Glasgow travelling through Helensburgh and the eastern side of the Gare Loch.

45. The M8/ A8 links Glasgow with the west of the region linking Paisley, Port Glasgow and Greenock and joining the A78 which runs down the west coast of the region linking with Largs and Irvine. The A736 and A 737 also link the south west of the region with Paisley and Glasgow and in the east of the region the A807 and A891 cross through.

46. The region is well covered by the rail network (see Annex 2) with:

- The North Clyde line connecting Helensburgh, Balloch and Milngavie (with Glasgow).
- The Croy line taking in the area around Kirkintilloch
- The Inverclyde line which links Paisley to Greenock, Gourock and Wemyss Bay
- The Ayrshire coast line which also links Paisley with Kilwinning, Irvine and Largs

47. However, any journey which involves crossing the River Clyde has to go via Glasgow and would involve a change of trains which does make it less convenient for north to south journeys.

⁴ Argyll & Bute (part), East Dunbartonshire, East Renfrewshire, Inverclyde, North Ayrshire, Renfrewshire, West Dunbartonshire

48. There is a good network of local bus services servicing the more urban and surrounding areas within the region with companies such as Arriva, First, McGill's and Stagecoach operating services. A number of services also link the region with Glasgow. All the services, however, in general, tend to be more localised rather than providing regular links between the more urban areas. As with the rail network there are also difficulties in finding direct routes between the north and south side of the River Clyde and any such services can have long journey times.

49. While the road network does link together a number of urban/ rural areas, the geographic nature of the region can impact on journey times for public transport. This is demonstrated at Annex 9 with a sample of journey times based on an office being located in Paisley, Dumbarton, Irvine and Kirkintilloch to provide examples using a car, rail and bus.

50. It should also be noted that the West Scotland region also includes the islands of Arran and Great Cumbrae which can only be accessed by ferry.

Financial Implications

51. The costs of adding a region to the list of those regions that can currently make application to the SPCB for an additional office are as follows

West of Scotland – possible 3 additional offices (£ 42,217)

Central Scotland – possible 2 additional offices (£ 32,274)

Glasgow – possible 2 additional offices (£ 29,177)

Lothian – possible 2 additional offices (£29,177)

52. These costs are based on the May 2011 election results. The total additional costs, if all 4 regions were permitted additional offices could be up to £132,900. It is possible that in a region which has more regional offices there could be a reduction in the number of surgeries held within parts of that region which could make a financial saving. For this report, it is not possible to quantify this as each Member will have his or her own local arrangements.

Conclusion

53. An additional office has been made available on application to the SPCB for the regions of Highlands and Islands, Mid Scotland and Fife, North East Scotland and South Scotland on the basis of geographic size. Using this criterion the largest region in size covered by this report is West Scotland, but at 2,332 km², this region is still only a quarter of the size of North East Scotland.

54. In saying this, the most significant change since the introduction of the provision for certain regions to be entitled to apply for an additional office has been the increase in geographic size of West Scotland, as a result of boundary changes with the inclusion of the Cunninghame South parliamentary constituency. There is therefore a greater case for adding West Scotland to the provision as it is larger in area than the combined Central

Scotland, Glasgow and Lothian regions. A similar argument could also be made based on electorate.

55. In the West of Scotland, while the transport network does cover all urban areas it is clear that, in terms of public transport travel times, considerable time has to be added on to journeys as most journeys tend to go via Glasgow, especially any journey across the River Clyde.

56. It could be argued that it is not necessary for constituents to travel to a regional office as Members can be contacted by letter, e-mail or telephone and most Members have regular surgeries held within various regional locations, although this argument would also apply to those regions currently entitled to an additional regional office.

57. The Central Scotland region is small in terms of area and it has also been reduced further in size with the area covered by the former Kilmarnock and Loudon constituency now forming part of the new South Scotland region.

58. Based on previous electoral arrangements this does make it more difficult to justify the Central Scotland region being included as one of the regions whereby Members may apply for an additional office. Although, in terms of accessibility within the region, the public transport network does go via Glasgow or Edinburgh which adds to the travel time between various towns.

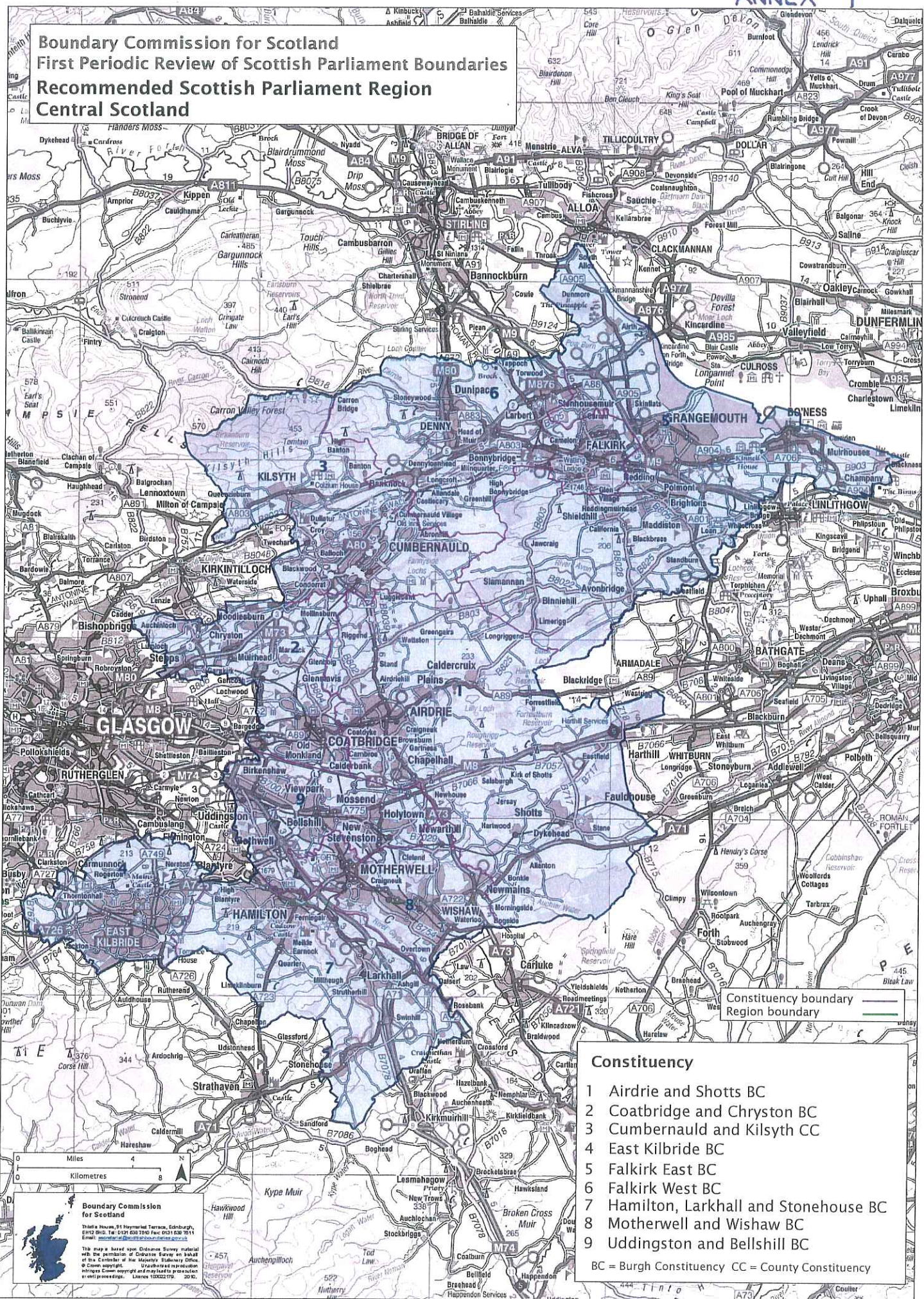
59. In terms of area, the Glasgow parliamentary region is the smallest and as can be seen from the annexes attached the region is well served by the public transport network. In these circumstances, it is difficult to put forward a case for an additional office to be considered for this region.

60. As with the Central Scotland parliamentary region, the Lothian parliamentary region has also reduced in size since the previous parliamentary session which makes an additional office more difficult to justify. Travel times, using public transport, are not as long as in other regions, although many journeys will involve a change at Edinburgh or other towns within the region.

61. Should the SPCB decide to increase the number of regions entitled to apply for an additional regional office per political party, it should be noted that this does not provide the regional Members with an automatic entitlement. Any application has to be approved by the SPCB.

62. In the past, such applications have been based on the geographical location of each office within the region. The SPCB would not expect regional offices from the same political party to be within a reasonable travelling distance of each other, and would expect the offices to be located to ensure a geographical spread within the region. The SPCB could also take into consideration the transport network and accessibility of each office for the electorate.

Boundary Commission for Scotland First Periodic Review of Scottish Parliament Boundaries Recommended Scottish Parliament Region Central Scotland



Constituency boundary
Region boundary

Constituency

- 1 Airdrie and Shotts BC
- 2 Coatbridge and Chryston BC
- 3 Cumbernauld and Kilsyth CC
- 4 East Kilbride BC
- 5 Falkirk East BC
- 6 Falkirk West BC
- 7 Hamilton, Larkhall and Stonehouse BC
- 8 Motherwell and Wishaw BC
- 9 Uddingston and Bellshill BC

BC = Burgh Constituency CC = County Constituency

Boundary Commission for Scotland
 Thistle House, 51 Haymarket Terrace, Edinburgh, EH1 1DG. Tel: 0131 626 7000 Fax: 0131 626 7014
 Email: secretariat@boundaries.scot.nps.gov.uk

This map is based upon Ordnance Survey material with the permission of Ordnance Survey on behalf of the Controller of Her Majesty's Stationery Office. © Crown copyright. Unauthorised reproduction infringes Crown copyright and may lead to prosecution or other proceedings. Licence 1000232779 2010.

Central Scotland - Travel Details Based on a Sample of Locations (All journeys are one way) **Annex 3A**

Motherwell to:

	Distance (miles)	Travel Time - Road ⁵	Travel Time - Rail ⁶	Travel Time - Bus ⁶
Cumbernauld	17	25 minutes	1 hour 15 minutes ⁷	1 hour 5 minutes ⁸
Strathaven	13	20	N/A	45 ⁹
Hamilton	3	5	10	10
Shotts	11	25	40 ¹⁰	55
Bo'ness	36	50	1 hour 15 ⁷	2 hours 40 ¹¹

⁵ AA route planner - www.theaa.com

⁶ www.travelinescotland.com

⁷ Change at Glasgow Central and go via Glasgow Queen Street

⁸ Change in Glasgow

⁹ Change in Hamilton

¹⁰ Change at Bellshill

¹¹ Change in Glasgow and Falkirk

Annex 3B

East Kilbride to:

	Distance (miles)	Travel Time - Road	Travel Time - Rail	Travel Time - Bus
Cumbernauld	20	30 minutes	1 hour 50 minutes ¹²	1 hour 25 minutes ¹³
Strathaven	9	15	N/A	30
Hamilton	7	15	1 hour 20 ¹⁴	30
Shotts	22	40	1 hour 30 ¹⁴	1 hour 35 ¹⁵
Bo'ness	40	55	1 hour 40 ¹²	3 hours ¹⁶

¹² Change at Glasgow Central and go via Glasgow Queen Street

¹³ Change in Glasgow

¹⁴ Change at Glasgow Central

¹⁵ Change in Motherwell

¹⁶ Change in Glasgow and Falkirk

Falkirk to:

Annex 3C

	Distance (miles)	Travel Time - Road	Travel Time - Rail	Travel Time - Bus
Cumbernauld	12	20 minutes	15 minutes	40 minutes
Strathaven	38	50	N/A	2 hours 55 ¹⁷
Hamilton	27	40	1 hour 15 ¹⁸	2 hours 20 ¹⁹
Shotts	21	50	1 hour 10 ²⁰	2 hours 10 ²¹
Bo'ness	8	20	5	30

¹⁷ Change in Glasgow and East Kilbride

¹⁸ Change at Cumbernauld and Motherwell

¹⁹ Change in Glasgow

²⁰ Change at Edinburgh

²¹ Change in Livingston

Boundary Commission for Scotland First Periodic Review of Scottish Parliament Boundaries Recommended Scottish Parliament Region Glasgow

Constituency

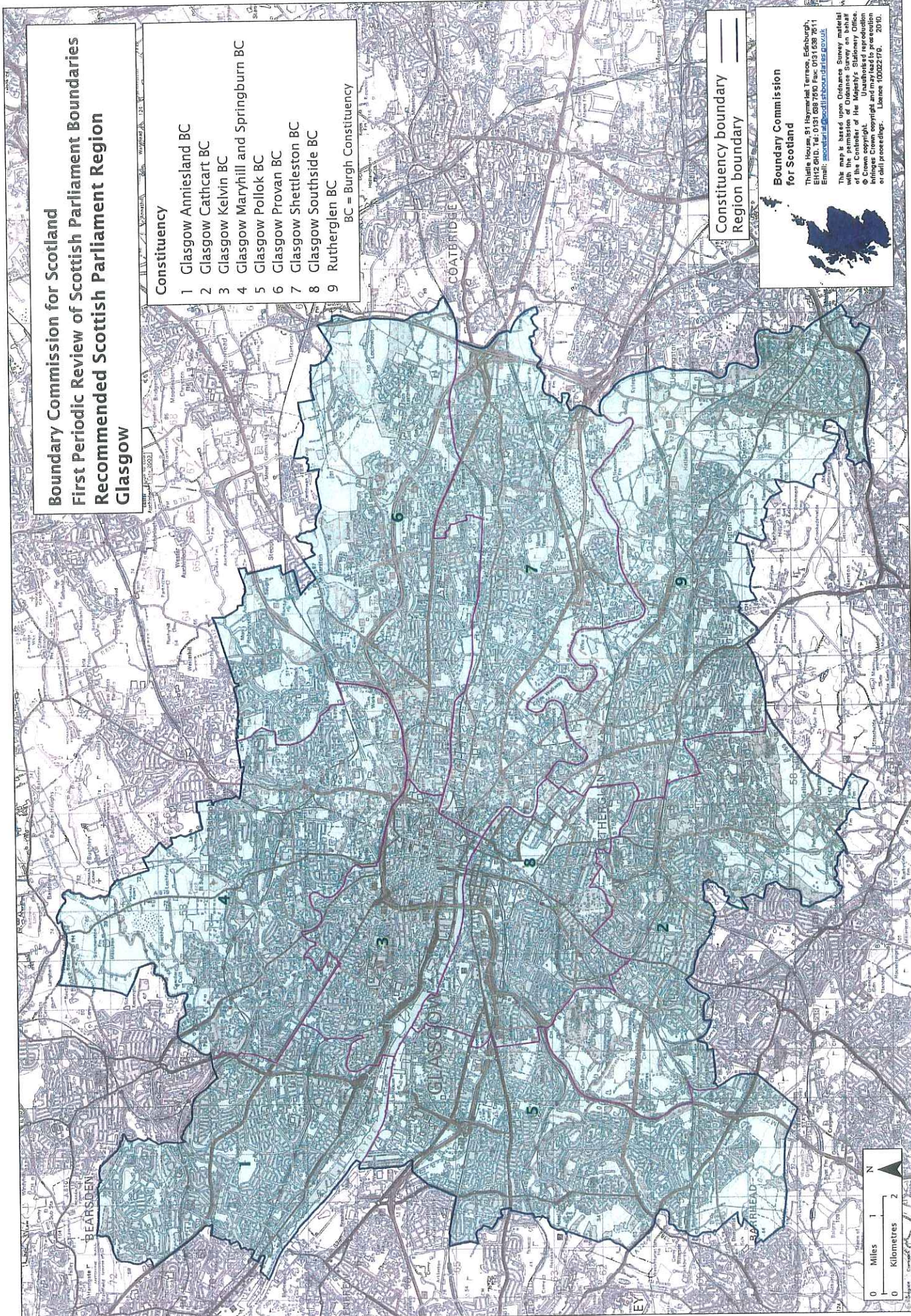
- 1 Glasgow Anniesland BC
 - 2 Glasgow Cathcart BC
 - 3 Glasgow Kelvin BC
 - 4 Glasgow Maryhill and Springburn BC
 - 5 Glasgow Pollok BC
 - 6 Glasgow Provan BC
 - 7 Glasgow Shettleston BC
 - 8 Glasgow Southside BC
 - 9 Rutherglen BC
- BC = Burgh Constituency

Constituency boundary
Region boundary

Boundary Commission
for Scotland

Thistle House, 81 Haymarket Terrace, Edinburgh
EH2 2ND. Tel: 0131 638 7910 Fax: 0131 638 7911
Email: scottish.parliament@boundaries.gov.uk

This map is based upon Ordnance Survey material
© Crown copyright. Unauthorised reproduction
infringes Crown copyright and may lead to prosecution
or civil proceedings. Licence 100022796. 2010.



Annex 5A

Glasgow - Travel Details Based on a Sample of Locations (All journeys are one way)

Cathcart to:

	Distance (miles)	Travel Time – Road ⁵	Travel Time - Rail ⁶	Travel Time – Bus ⁶
City centre	4	15 minutes	15 minutes	25 minutes
Rutherglen	2	5	30	25
Maryhill	7	20	1 hour 10	55
Baillieston	8	20	45	1 hour 5
Drumchapel	10	25	50	1 hour 10

Annex 5B

Pollok to:

	Distance (miles)	Travel Time – Road	Travel Time - Rail	Travel Time – Bus
City centre	7	15 minutes	N/A	10 minutes
Rutherglen	4	10	N/A	45
Maryhill	9	20	N/A	35
Baillieston	9	20	N/A	55
Drumchapel	9	20	N/A	55

Annex 5C

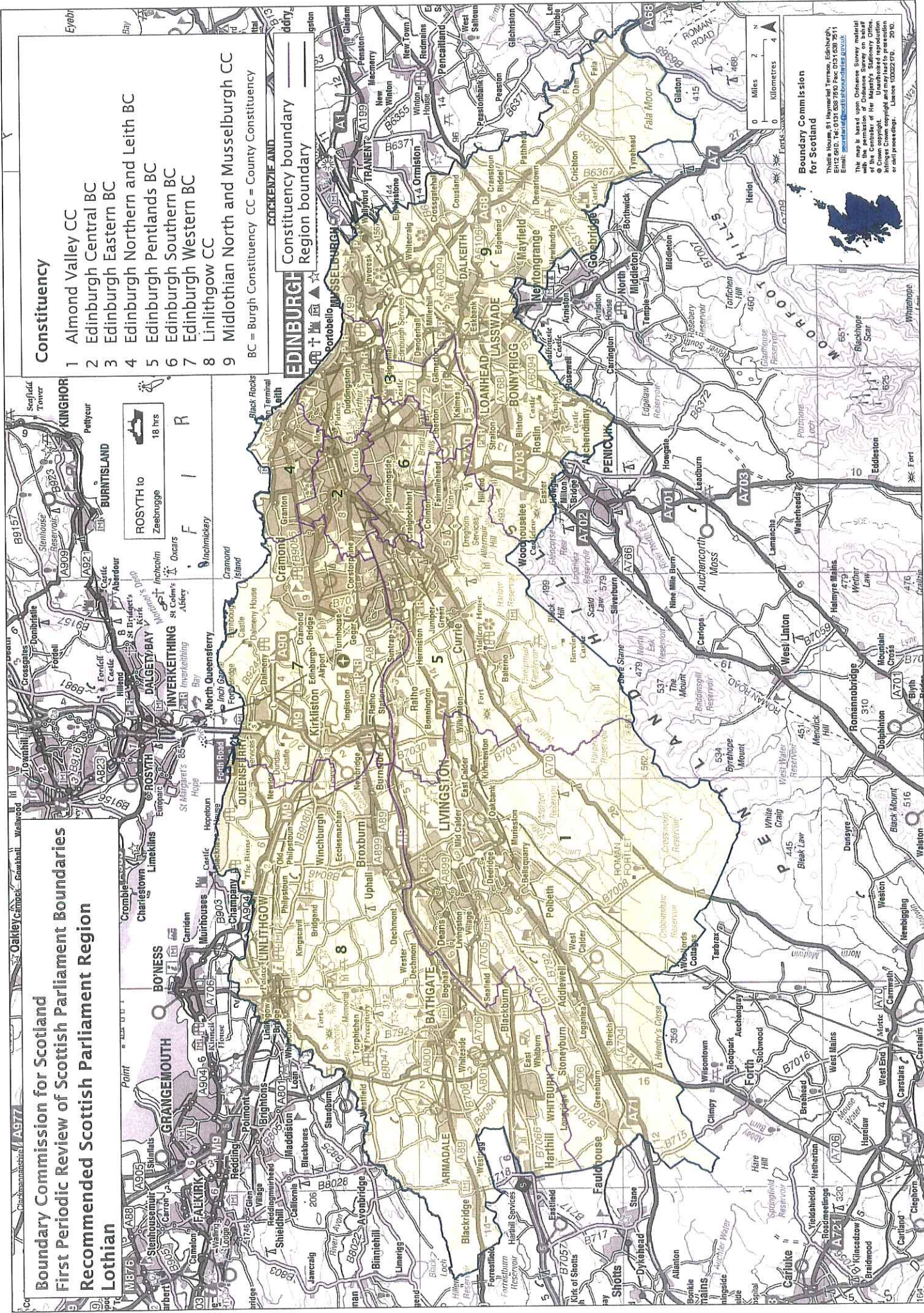
Shettleston to:

	Distance (miles)	Travel Time - Road	Travel Time - Rail	Travel Time - Bus
City centre	6	15 minutes	10 minutes	35 minutes
Rutherglen	5	10	35	25
Maryhill	8	20	40	55
Baillieston	2	5	1 hour 5	10
Drumchapel	11	25	25	1 hour 20

Annex 5D

Springburn to:

	Distance (miles)	Travel Time - Road	Travel Time - Rail	Travel Time - Bus
City centre	3	5 minutes	10 minutes	15 minutes
Rutherglen	4	10	30	40
Maryhill	3	10	50	15
Baillieston	7	15	1 hour 10	45
Drumchapel	8	20	35	50



Lothian - Travel Details Based on a Sample of Locations (All journeys are one way)

Annex 7A

Edinburgh to:

	Distance (miles)	Travel Time – Road ⁵	Travel Time – Rail ⁶	Travel Time – Bus ⁶
Bathgate	22	35 minutes	30 minutes	1 hour 15 minutes
Livingston	16	30	20	1 hour 10
South Queensferry	11	25	15	45
Bonnyrigg	8	15	N/A	35
Musselburgh	7	15	5	35

Annex 7B

Armadale to:

	Distance (miles)	Travel Time - Road	Travel Time - Rail	Travel Time - Bus
Bathgate	3	5 minutes	5 minutes	10 minutes
Livingston	10	25	10	45
South Queensferry	20	30	45 ²²	1 hour 5 ²³
Bonnyrigg	27	40	N/A	2 hours 10 ²⁴
Musselburgh	30	40	1 hour 5 ²²	2 hours ²⁴

²² Change at Edinburgh

²³ Change at Bathgate

²⁴ Change at Bathgate and Edinburgh

Annex 7C

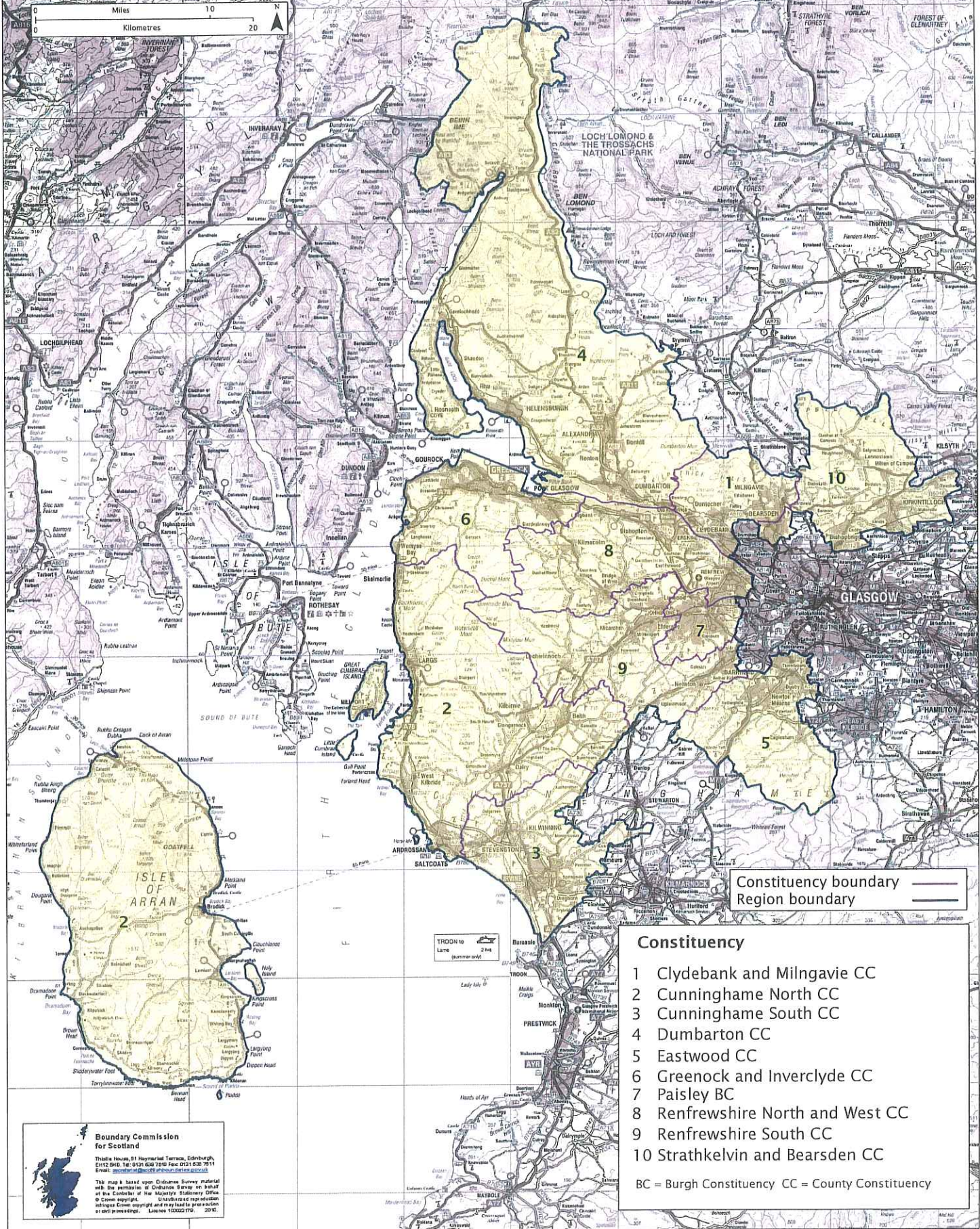
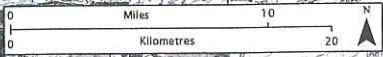
Linlithgow to:

	Distance (miles)	Travel Time - Road	Travel Time - Rail	Travel Time - Bus
Bathgate	9	15 minutes	55 minutes ²⁵	50 minutes ²⁶
Livingston	18	30	45 ²⁵	45
South Queensferry	9	20	40 ²⁵	25
Bonnyrigg	24	35	N/A	1 hour 45 ²⁵
Musselburgh	28	35	45 ²⁵	1 hour 35 ²⁵

²⁵ Change at Edinburgh

²⁶ Change at Broxburn

**Boundary Commission for Scotland
First Periodic Review of Scottish Parliament Boundaries
Recommended Scottish Parliament Region
West Scotland**



Constituency boundary ———
Region boundary ———

- Constituency**
- 1 Clydebank and Milngavie CC
 - 2 Cunninghame North CC
 - 3 Cunninghame South CC
 - 4 Dumbarton CC
 - 5 Eastwood CC
 - 6 Greenock and Inverclyde CC
 - 7 Paisley BC
 - 8 Renfrewshire North and West CC
 - 9 Renfrewshire South CC
 - 10 Strathkelvin and Bearsden CC
- BC = Burgh Constituency CC = County Constituency

Boundary Commission for Scotland
Thistle House, 51 Haymarket Terrace, Edinburgh, EH2 2JD. Tel: 0131 606 7490 Fax: 0131 626 7011 Email: members@boundaries.parliament.scot.nhs.gov.uk

This map is based upon Ordnance Survey material with the permission of Ordnance Survey on behalf of the Controller of Her Majesty's Stationery Office. © Crown copyright. Unauthorised reproduction of this map is prohibited. Licence 100022179. 2010.

Annex 7D

Dalkeith to:

	Distance (miles)	Travel Time - Road	Travel Time - Rail	Travel Time - Bus
Bathgate	26	35 minutes	N/A	1 hour 20 minutes ²⁷
Livingston	20	30	N/A	45
South Queensferry	19	30	N/A	1 hour 35 ²⁸
Bonnyrigg	3	5	N/A	10
Musselburgh	5	10	N/A	20

²⁷ Change in Edinburgh and Livingston

²⁸ Change in Edinburgh

Annex 9A

West Scotland - Travel Details Based on a Sample of Locations (All journeys are one way)

Paisley to:

	Distance (miles)	Travel Time – Road ⁵	Travel Time – Rail ⁶	Travel Time – Bus ⁶
Greenock	17	25 minutes	30 minutes	45 minutes
Helensburgh	21	35	1hour 30 ²⁹	1 hour 50 ³⁰
Largs	24	45	60	55
Busby	8	15	50 ³⁰	1 hour 20 ³⁰
Kilwinning	22	30	25	1 hour 10 ³¹
Kilmacolm	12	20	N/A	40 ³²

²⁹ Change at Glasgow Central and go via Glasgow Queen Street

³⁰ Change in Glasgow

³¹ Change in Lochwinnoch

³² Change in Linwood

Annex 9B

Dumbarton to:

	Distance (miles)	Travel Time - Road	Travel Time - Rail	Travel Time - Bus
Greenock	20	30 minutes	1 hour 50 minutes ³³	1 hour 50 minutes ³⁴
Helensburgh	9	30	20	20
Largs	34	50	1 hour 50 ³⁵	2 hours 40 ³⁴
Busby	21	35	1 hour 15 ³⁵	1 hour 40 ³⁴
Kilwinning	31	45	1 hour 30 ³⁵	2 hours ³⁴
Kilmacolm	16	30	N/A	1 hour 50 ³⁴

³³ Change at Glasgow Central and Dalmeir

³⁴ Change at Glasgow

³⁵ Change at Hyndland and Glasgow Central

Annex 9C

Irvine to:

	Distance (miles)	Travel Time - Road	Travel Time - Rail	Travel Time - Bus
Greenock	33	50 minutes	60minutes ³⁶	1 hour 50 minutes
Helensburgh	43	65	2 hours ³⁷	2 hours 20 ³⁸
Largs	19	30	45 ³⁹	60
Busby	30	40	1 hour 40 ³⁸	1 hour 30 ⁴⁰
Kilwinning	3	5	5	15
Kilmacolm	27	45	N/A	1 hour 50 ⁴¹

³⁶ Change at Paisley

³⁷ Change at Glasgow Central and go via Glasgow Queen Street

³⁸ Change at Glasgow

³⁹ Change at Kilwinning

⁴⁰ Change at Kilmarnock and East Kilbride

⁴¹ Change at Lochwinnoch and Linwood

Kirkintilloch to:

Annex 9D

	Distance (miles)	Travel Time - Road	Travel Time ⁴² - Rail	Travel Time - Bus
Greenock	34	45 minutes	1 hour 30 minutes ⁴³	1 hour 30 minutes ⁴⁴
Helensburgh	27	55	1 hour 35 ⁴⁵	2 hours ⁴⁴
Largs	41	1 hour 5	2 hours ⁴³	2 hours 10 ⁴⁴
Busby	19	30	1 hour 20 ⁴³	1 hour 25 ⁴⁴
Kilwinning	39	50	1 hour 25 ⁴³	1 hour 45 ⁴⁴
Kilmacolm	28	40	N/A	1 hour 30 ⁴⁴

⁴² Based on travel from Bishopbriggs

⁴³ Change at Glasgow Queen Street and go via Glasgow Central

⁴⁴ Change at Glasgow

⁴⁵ Change at Glasgow Queen Street