



The Scottish
Parliament

HOLYROOD BUILDING PROJECT

NEWSLETTER NO 9
FEBRUARY 2003

PARLIAMENT BUILDING INFORMATION CENTRE

The New Parliament Building Visitor Centre closed on 1 November to allow work to continue on the landscaping. During the 2 years in which it was open to the public over 72,000 people passed through the doors, including professional groups, VIPs from home and abroad and school parties, as well as many members of the public. The visitors' book recorded comments from many of these visitors, with positive comments far outweighing any negative responses.

On 9 December a new Building Information Centre opened in the Tun on Holyrood Road. The new Centre contains models, plans and computer generated images of the new building, samples of internal and external finishes, video and touchscreens. A Parliament shop selling a range of Parliament merchandise is due to open within the next few weeks. The Centre is open every day from 10.00am to 4.00pm.



Vaulted ceiling in the public foyer



Leaf shaped lobby roof lights

SCOTTISH PARLIAMENT OPEN DAY

The Parliament's Open Day, held on 28 September, attracted around 700 visitors. There were opportunities to view construction progress from a safe viewing area, and a free shuttle bus also gave visitors the opportunity to visit the temporary Debating Chamber on the Mound.

VOICES OF SCOTLAND

The quotes submitted through local newspapers by members of the public are now on display on the hoardings around the site, and on 7 December over 300 people from all over Scotland, who had participated in this exercise, were invited to view their quotes and have their photographs taken for their local newspapers. The event was a great success, and resulted in positive feedback from everyone involved. It is hoped that all the quotes will be on the Parliament's website soon.



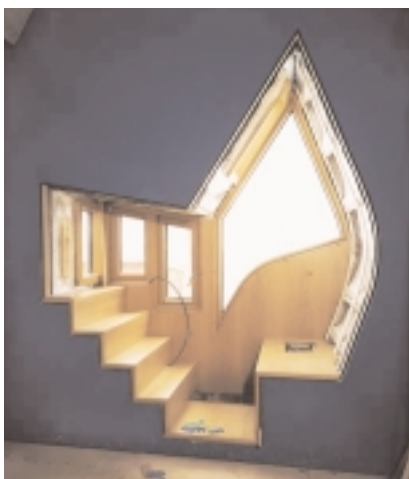
View from underneath lobby roof lights

CONSTRUCTION UPDATE

Since the last newsletter there has been significant progress on the construction of the building.

MSP Building

The feature windows on the west façade of the building, which will provide the office accommodation for the MSPs, are steadily being installed. Surrounded by a mosaic of materials, including the grey sparkling Kemnay granite from Aberdeenshire, the top two rows of windows are now clearly visible from Reid's Close. Enric Miralles' inspiration for these windows is taken from the profile of Sir Henry Raeburn's painting of the Rev



MSP window interior

Robert Walker skating on Duddingston Loch and will no doubt be a well photographed image of the Parliament building for years to come.

Inside the MSP building work continues in fitting out the offices. A purpose built storage wall in a combination of oak and sycamore, manufactured by Ben Dawson of Musselburgh, is one of the features in each of the 106 offices. Other characteristics include a concrete vaulted ceiling unit. Weighing 18 tons each, these units were cast off-site and lifted into place when the in-situ concrete frames were ready to accept them. The intention is that the high standard of concrete finish will be left exposed (i.e. not painted).



MSP window exterior

Queensberry House

Scaffolding has been removed from the south facing façade of Queensberry House, revealing for the first time the hand made terracotta pantiles covering the roof of this 17th century building. The façade has been harled and the first coatings of lime wash applied. All the windows have been replaced with those of a design in keeping with the previous windows.

Internally, work continues in fitting out the building. The vast majority of the timber floors have been removed and replaced with concrete floors reinforced with steel beams. Walls have been re-grouted to provide the strength necessary to support the new floors



Queensberry House

and to supply a level of protection which meets the security requirements for the building.

Lobby

Construction of the lobby space, which links all the buildings on the site, is progressing well with 8 of the 12 leaf shaped roof lights now in place. When the building is completed and occupied the foyer will be the main thoroughfare as MSPs and parliamentary staff move around the complex.

Committee Towers

The buildings, which will accommodate the 2 large and 4 smaller committee rooms, are currently being fitted out. On a similar theme to the landings in the stairs of the MSP building, Kemnay Granite is currently being laid in the internal stairs of these buildings.

The carcass of the first of the unique shaped vaulted ceilings, which will be a feature in each of the committee rooms, is currently being installed. All 6 committee rooms will provide seating for the press and the public. Committee meetings held in these rooms will be capable of being televised.



Construction of vaulted ceilings in Committee room

Externally, the installation of the windows is now under way and Kemnay granite can occasionally be seen from gaps in the sheeting, which currently shroud the towers. The “upturned boat” design, which forms the roofs of each of these buildings, is clearly visible on one of the towers from the perimeter of the site.

Debating Chamber and Media Tower

All the European oak laminated beams and stainless steel nodes (connecting joints) which will form the roof of the debating chamber are in place. While currently covered for protection, once the stainless steel roof covering is in place, the beams and nodes will be revealed and will be an striking internal feature of the Parliament’s main debating arena.

Externally, with the steelwork now in place work is ongoing in preparing the façade of the chamber for the installation of the final cladding. On the media tower, which is connected to the debating chamber, only a few of the high quality concrete panels and oak windows, which clad this building, have to be installed.



Inside the Debating Chamber

Landscaping

A reorganisation of the site “works” accommodation has taken place over the past few months. This was necessary to allow for the hard landscaping works, between the Parliament building and the Palace of Holyroodhouse, to be carried out in time for the re-opening of Horse Wynd later

this year. Work is also ongoing in the creation of the concrete structures flowing from the site into Holyrood Park. These structures, when complete, will be covered in grass to form the connection of the building with the adjacent parkland. This is consistent with Enric Miralles' conceptual design statement of "the Parliament sitting in the land".

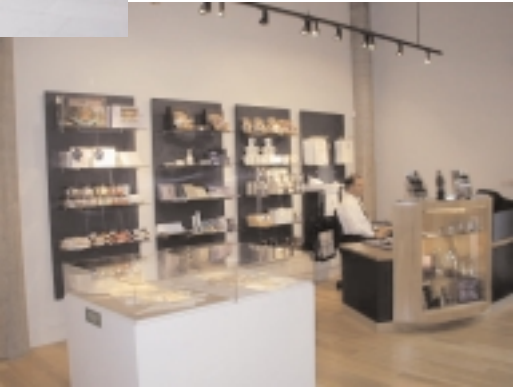
UPDATE ON PROGRAMME AND COSTS

In January of this year our Construction Managers, Bovis Lend Lease, reported to the Scottish Parliamentary Corporate Body (SPCB) that the construction and internal fit-out of the majority of the complex is now on target for completion between the end of August and the end of October 2003. Allowing an additional period for the completion of the debating chamber and the boundary wall, the SPCB now expects the building to be handed over in its entirety in November 2003.

The Parliament's cost consultants also reported that variations and delays to some works packages, and increases in fees and site running costs would result in a total cost increase of £13.4m, bringing the revised overall target figure to £323.9m. This figure excludes landscaping costs of £14m. The SPCB will continue to monitor both issues closely over the coming months.

FURTHER INFORMATION

The Holyrood Building Project newsletter is produced on a regular basis depending on the amount of information available. However we recognise that you may have specific questions on the project. Any queries on site related aspects of the project should be directed to Bovis Lend Lease on 0131 472 7100. Other general queries should initially be directed to Vicky O'Donnell of the Project Team on 0131 348 6524.



New Building Information Centre